

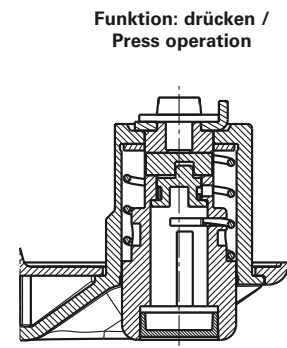
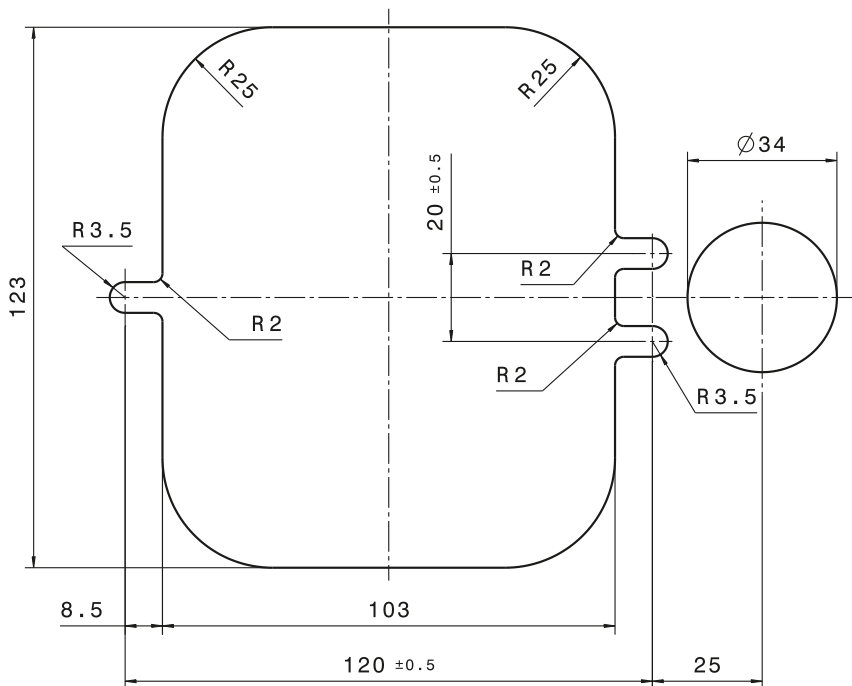
Griffe und Schließsysteme für Türen Handles and locking systems for doors

HAPPICH GmbH

Lise-Meitner-Straße 14
42119 Wuppertal
Deutschland

Telefon +49 (0)202.87 03 – 0
Fax +49 (0)202.87 03 – 599
E-Mail info@happich.de

www.happich.de



600 0653

Türgriff

Funktion: drücken
 vorgerichtet ohne Zylinder
 Griffkörper und Griffschale: PA 6, UV-beständig, schwarz
 Druckknopf: GD Zn
 400 g/St. VE 2 St.

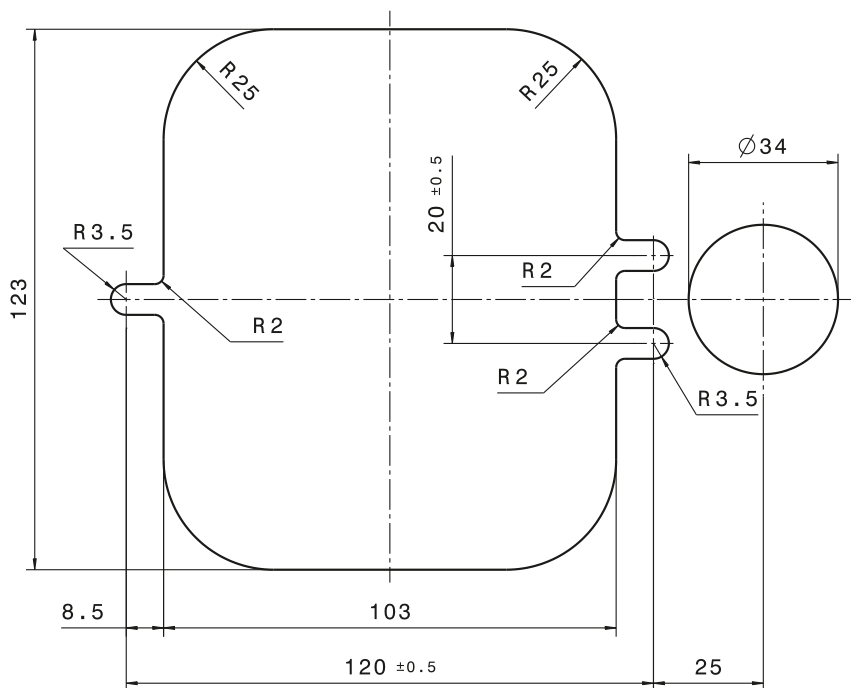
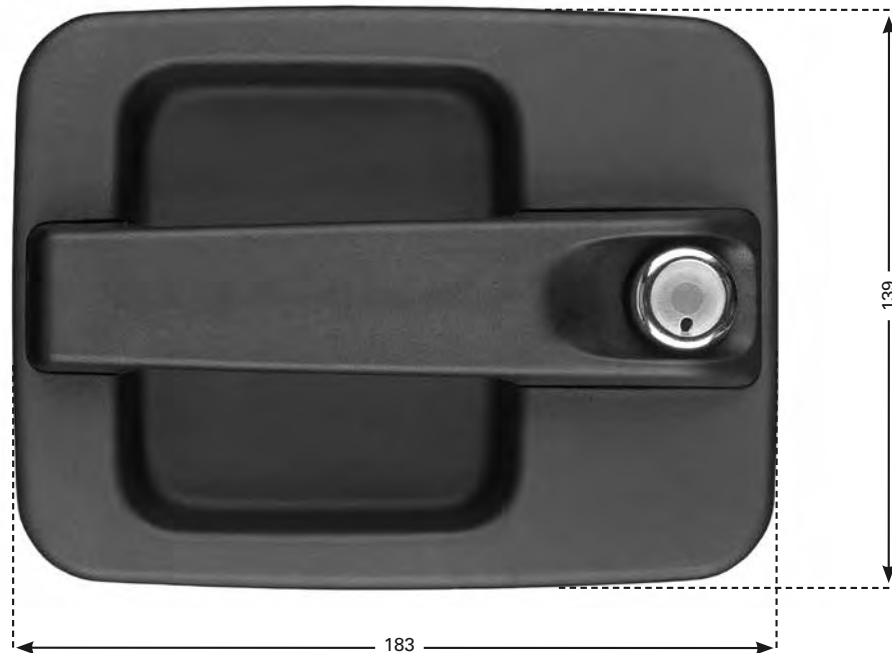
Gesondert bestellen:
 Schließzylinder und Schlüssel siehe Seite 4 oder 5
 Drehfallenschloss 600 0517 / 0518

600 0653

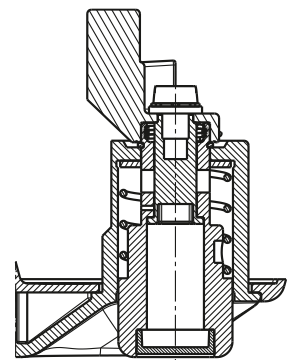
Door handle

Operation: press
 designed for locking system but without cylinder
 Handle and housing: UV-stabilised PA 6, black
 Push button: die-cast Zn
 400 g/each S.U. 2

Order separately:
 locking cylinder and key refer to page 4 or 5.
 Rotary catch lock 600 0517 / 0518



Funktion: drücken und drehen /
Press and turn operation



600 N065

Türgriff

Funktion: drücken und drehen
vorgefertigt ohne Zylinder

Griffkörper und Griffschale: PA 6, UV-beständig, schwarz

Druckknopf: GD Zn

476 g/St.

VE 1 St.

Gesondert bestellen:

Schließzylinder und Schlüssel siehe Seite 4 oder 5

Sicherheits-Drehfallenschloss 600 0501 / 0502

600 N065

Door handle

Press and turn operation

designed for locking system but without cylinder

Handle and housing: UV-stabilised PA 6, black

Push button: die-cast Zn

476 g/each

S.U. 1

Order separately:

locking cylinder and key refer to page 4 or 5.

Safety rotary catch lock 600 0501 / 0502

Kombinationsmöglichkeiten / Possible combinations



600 0653



600 0517

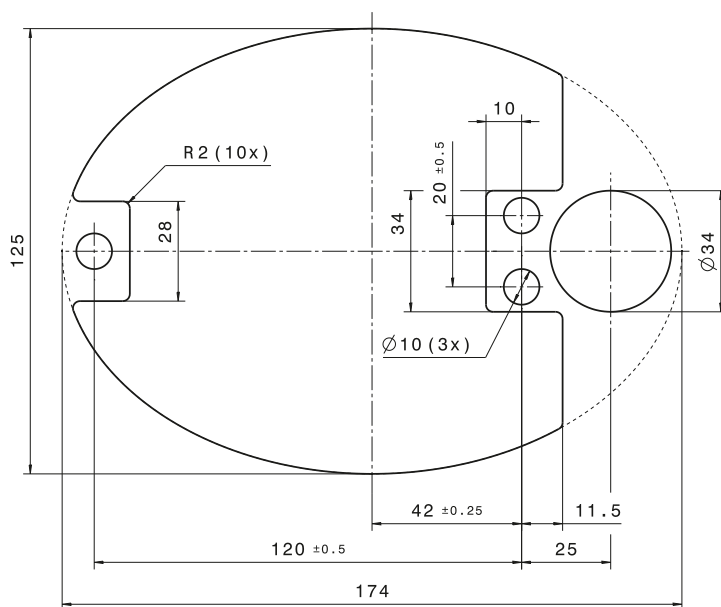
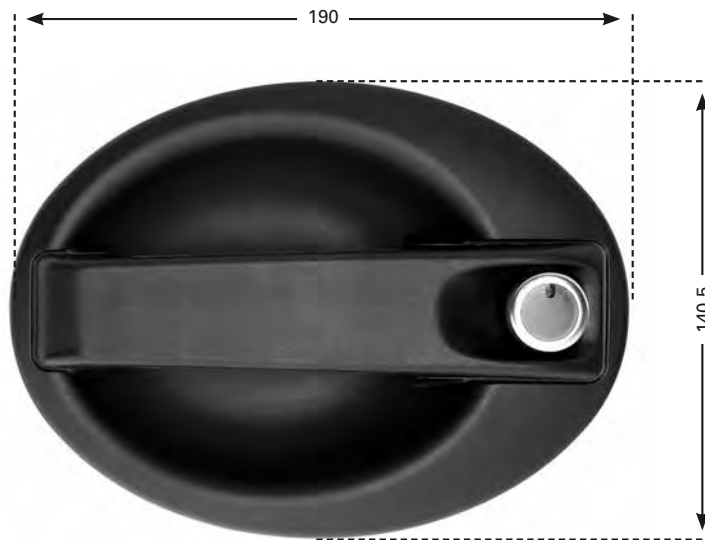


600 0513

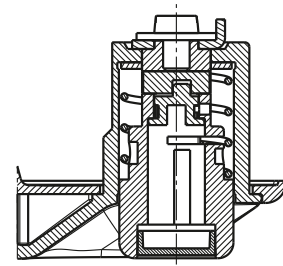


602 0540

Griff Handle	Schloss Lock	Bolzen Bolt	Innenbetätigung Interior door release
600 0653 drücken / press	600 0517 links / left	600 0513 links / left	602 0540
	600 0518 rechts / right	600 0514 rechts / right	602 0540
	600 0575 links, ohne Sicherungsraste / left, without safety catch	600 0598	integriert / integrated
	600 0576 rechts, ohne Sicherungsraste / right, without safety catch	600 0598	integriert / integrated
	600 0577 links, mit Sicherungsraste / left, with safety catch	600 0598	integriert / integrated
	600 0578 rechts, mit Sicherungsraste / right, with safety catch	600 0598	integriert / integrated
	600 0579 links, ohne Sicherungsraste / left, without safety catch	600 0598	integriert / integrated
	600 0580 rechts, ohne Sicherungsraste / right, without safety catch	600 0598	integriert / integrated
	600 0581 links ohne Sicherungsraste / left without safety catch	600 0598	602 0540
	600 0582 rechts ohne Sicherungsraste / right without safety catch	600 0598	602 0540
600 N065 drücken und drehen press and turn	600 0501 links / left	600 0513 links / left	602 0540 links / left
	600 0502 rechts / right	600 0514 rechts / right	602 0540 rechts / right



**Funktion: drücken /
Press operation**



600 0654

Türgriff

Funktion: drücken

vorgerichtet ohne Zylinder

Griffkörper und Griffschale: PA 6 UV-beständig, schwarz

Druckknopf: GD Zn

318 g/St.

VE 2 St.

Gesondert bestellen:

Schließzylinder und Schlüssel siehe Seite 4 oder 5

Drehfallenschloss 600 0517 / 0518

600 0654

Door handle

Press operation

designed for locking system but without cylinder

Handle and housing: PA 6 UV-stabilized, black

Push button: die-cast Zn

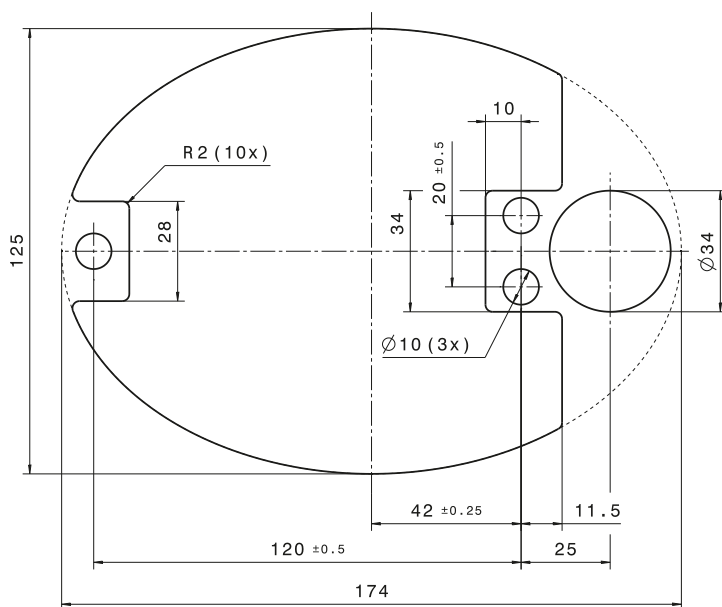
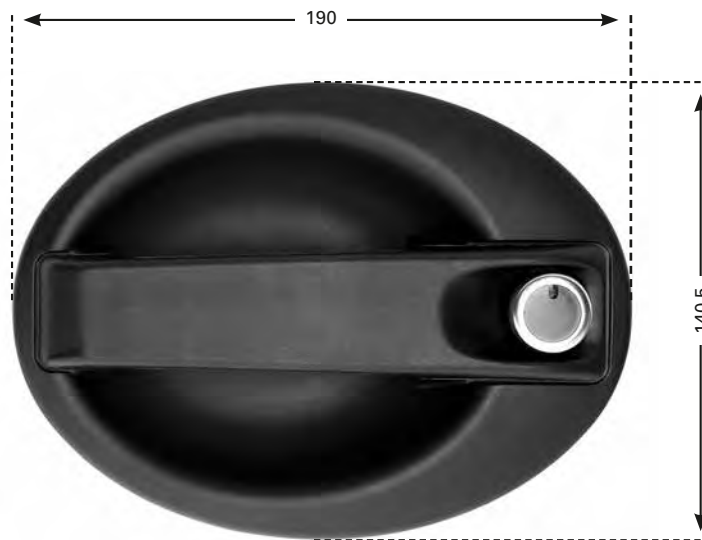
318 g/each

S.U. 2

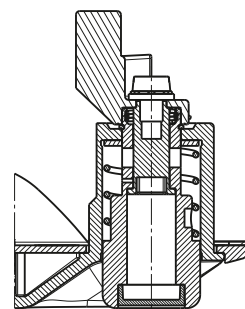
Order separately:

locking cylinder and key refer to page 4 or 5

Rotary catch lock 600 0517 / 0518



**Funktion: drücken und drehen /
Press and turn operation**



600 N066

Türgriff

Funktion: drücken und drehen
vorgefertigt ohne Zylinder

Griffkörper und Griffschale: PA 6 UV-beständig, schwarz

Druckknopf: GD Zn

318 g/St.

VE 2 St.

Gesondert bestellen:

Schließzylinder und Schlüssel siehe Seite 4 oder 5

Drehfallenschloss 600 0501 / 0502

600 N066

Door handle

Press and turn operation

designed for locking system but without cylinder

Handle and housing: PA 6 UV-stabilized, black

Push button: die-cast Zn

318 g/each

S.U. 2

Order separately:

locking cylinder and key refer to page 4 or 5

Rotary catch lock 600 0501 / 0502

Kombinationsmöglichkeiten / Possible combinations



600 N066



600 0517



600 0513

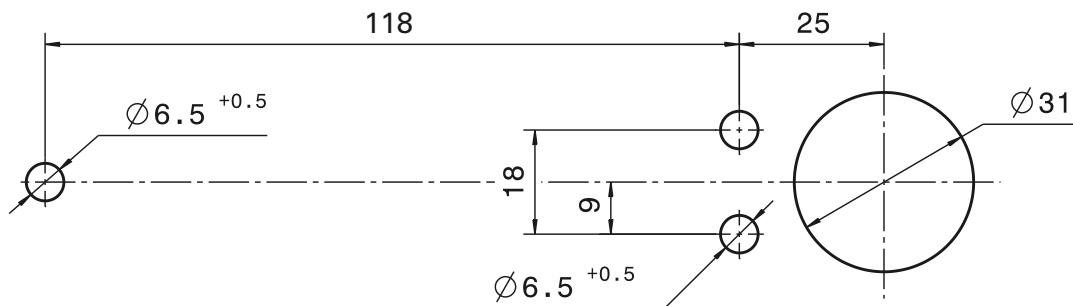


602 0540

Griff Handle	Schloss Lock	Bolzen Bolt	Innenbetätigung Interior door release
600 0654 drücken / press	600 0517 links / left	600 0513 links / left	602 0540
	600 0518 rechts / right	600 0514 rechts / right	602 0540
	600 0575 links, ohne Sicherungsraste / left, without safety catch	600 0598	integriert / integrated
	600 0576 rechts, ohne Sicherungsraste / right, without safety catch	600 0598	integriert / integrated
	600 0577 links, mit Sicherungsraste / left, with safety catch	600 0598	integriert / integrated
	600 0578 rechts, mit Sicherungsraste / right, with safety catch	600 0598	integriert / integrated
	600 0579 links, ohne Sicherungsraste / left, without safety catch	600 0598	integriert / integrated
	600 0580 rechts, ohne Sicherungsraste / right, without safety catch	600 0598	integriert / integrated
	600 0581 links ohne Sicherungsraste / left without safety catch	600 0598	602 0540
	600 0582 rechts ohne Sicherungsraste / right without safety catch	600 0598	602 0540
600 N066 drücken und drehen press and turn	600 0501 links / left	600 0513 links / left	602 0540 links / left
	600 0502 rechts / right	600 0514 rechts / right	602 0540 rechts / right



Wandausschnitt / panel cut-out



580 0192

Schloss-Außengriff

Funktion: drücken
 vorgerichtet ohne Zylinder
 mit EPDM Formdichtung
 Griff: Kunststoff PA 6 GF, schwarz
 Druckknopf: GD Zn verchromt
 300 g/St

VE 1 St.

Gesondert bestellen:
 Schließzylinder und Schlüssel siehe Seite 4 or 5
 Drehfallenschloss 600 0517 / 0518
 und für Kabinen-Drehfallenschlösser Seite 81-83.

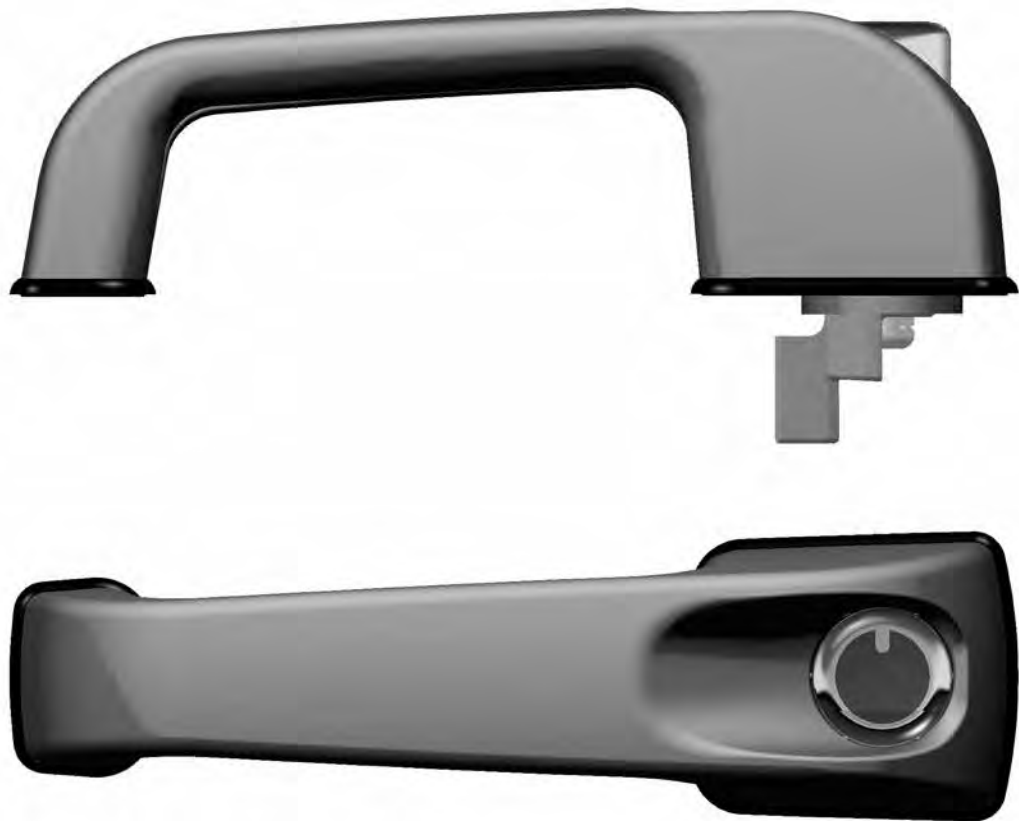
580 0192

Lockable exterior handle

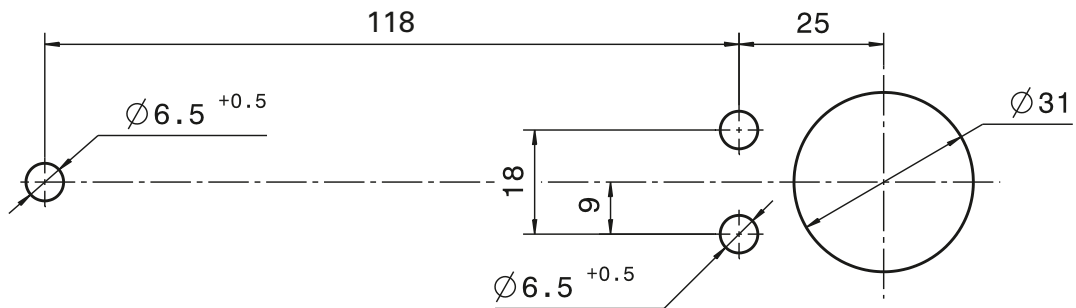
Press operation
 designed for locking system but without cylinder
 Moulded rubber seal, EPDM
 Handle: Plastic PA 6 GF, black
 Push button: die-cast Zn
 300 g/each

S.U. 1

Order separately:
 locking cylinder and key refer to page 4 or 5
 Rotary catch lock 600 0517 / 0518
 and for cab rotary latch locks please refer to page 81-83.



Wandausschnitt / panel cut-out



580 0193

Schloss-Außengriff

Funktion: drücken und drehen
 vorgerichtet ohne Zylinder
 mit EPDM Formdichtung
 Griff: Kunststoff PA 6 GF, schwarz
 Druckknopf: GD Zn verchromt
 300 g/St

VE 1 St.

Gesondert bestellen:
 Schließzylinder und Schlüssel siehe Seite 4 oder 5
 Drehfallenschloss 600 0501 / 0502

580 0193

Lockable exterior handle

Press and turn operation
 designed for locking system but without cylinder
 Moulded rubber seal, EPDM
 Handle: Plastic PA 6 GF, black
 Push button: die-cast Zn
 300 g/each

S.U. 1

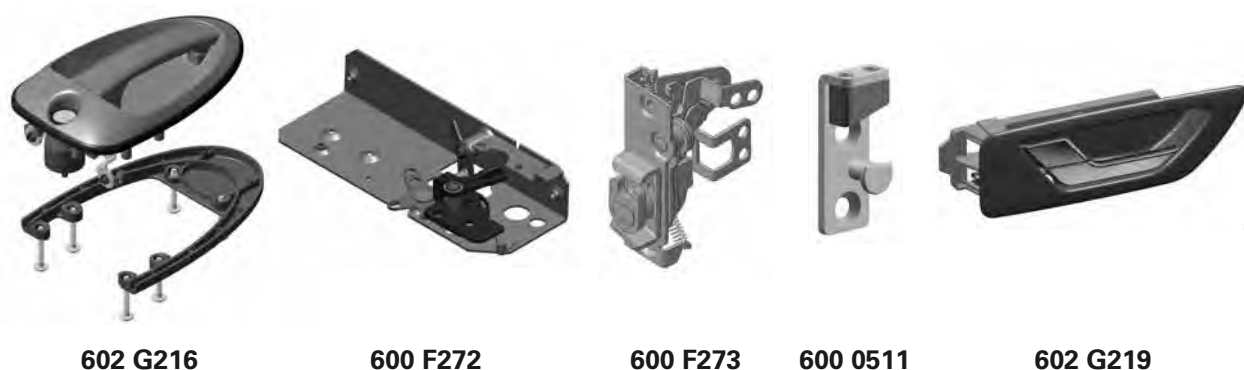
Order separately:
 locking cylinder and key refer to page 4 or 5
 Rotary catch lock 600 0501 / 0502

Kombinationsmöglichkeiten / Possible combinations



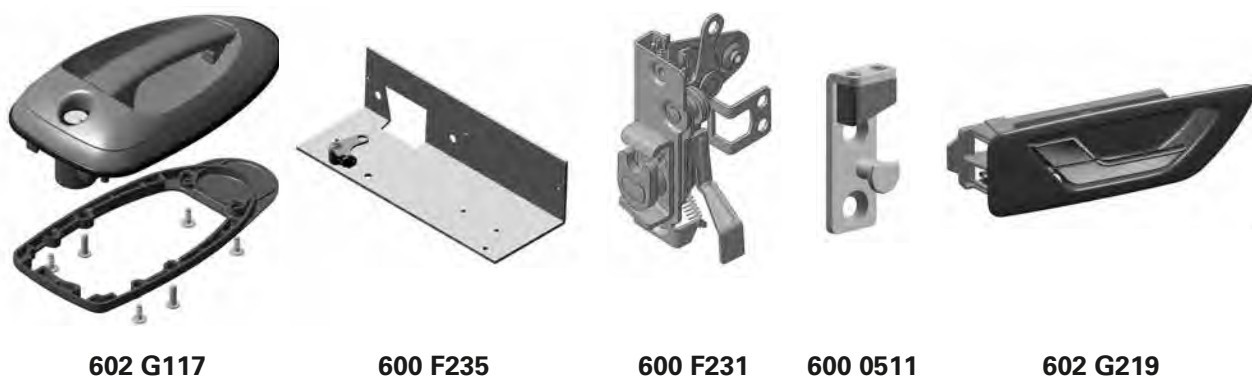
Griff Handle	Schloss Lock	Bolzen Bolt	Innenbetätigung Interior door release
580 0192 drücken / press	600 0517 links / left	600 0513 links / left	602 0540
	600 0518 rechts / right	600 0514 rechts / right	602 0540
	600 0575 links, ohne Sicherungsraste / left, without safety catch	600 0598	integriert / integrated
	600 0576 rechts, ohne Sicherungsraste / right, without safety catch	600 0598	integriert / integrated
	600 0577 links, mit Sicherungsraste / left, with safety catch	600 0598	integriert / integrated
	600 0578 rechts, mit Sicherungsraste / right, with safety catch	600 0598	integriert / integrated
	600 0579 links, ohne Sicherungsraste / left, without safety catch	600 0598	integriert / integrated
	600 0580 rechts, ohne Sicherungsraste / right, without safety catch	600 0598	integriert / integrated
	600 0581 links ohne Sicherungsraste / left without safety catch	600 0598	602 0540
	600 0582 rechts ohne Sicherungsraste / right without safety catch	600 0598	602 0540
580 0193 drücken und drehen press and turn	600 0501 links / left	600 0513 links / left	602 0540 links / left
	600 0502 rechts / right	600 0514 rechts / right	602 0540 rechts / right

Kombinationsmöglichkeiten / Possible combinations



Griff Handle	Schließknoten Locking Centre *1)	Schloss Lock	Bolzen Bolt	Innenbetätigung Interior door release
602 G216	600 F272	600 F273 unten / down	600 0511 unten / down	602 G219 links / left
		600 F274 oben / up	600 0512 oben / up	
		600 F274 unten / down	600 0512 unten / down	602 G220 rechts / right
		600 F273 oben / up	600 0511 oben / up	

*1) Kombinierbar mit Stellelement S. 24 / combineable with actuator page 24



Griff Handle	Schließknoten Locking Centre *1)	Schloss Lock	Bolzen Bolt	Innenbetätigung Interior door release
602 G117	auf Anfrage	600 F231 links / left	600 0511 links / left	602 G219 links / left
		600 F232 rechts / right	600 0512 rechts / right	602 G220 rechts / right
		600 F292 links / left	600 0511 links / left	602 G219 links / left

*1) Kombinierbar mit Stellelement S. 24 / combineable with actuator page 24.

Abb. / Illus. 1



Abb. / Illus. 2



602 G117 für 1-Punkt-Verriegelung (Abb. 1)
602 G216 für 2-Punkt-Verriegelung (Abb. 2)

Türaußengriff (auf Anfrage)

vorgerichtet ohne Zylinder
EPDM-Formgummi-Dichtrahmen
Kunststoff PA 6 GF 30, schwarz

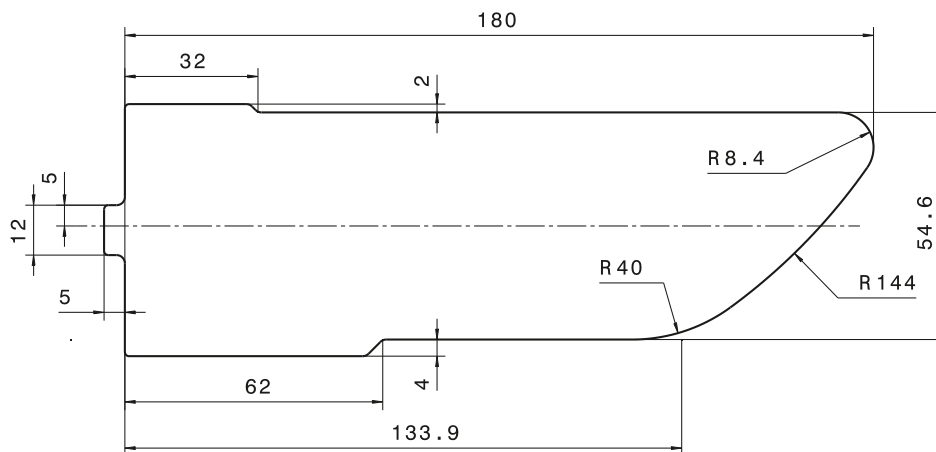
Gesondert bestellen:
Schließzylinder und Schlüssel siehe Seite 4 oder 5.

602 G117 for 1-Point locking system (Illus. 1)
602 G216 for 2-Point locking system (Illus. 2)

Exterior door handle (on request)

designed for locking system but without cylinder
Moulded rubber seal, EPDM
plastic PA 6 GF 30, black

Order separately:
locking cylinder and key refer to page 4 or 5.



602 G219 links (Abb.)
602 G220 rechts

Türinnenbetätigung (auf Anfrage)

öffnen / verriegeln
 Kunststoff, schwarz / Druckguss
 300 g/St.

602 G219 left (Illus.)
602 G220 right

Interior release (on request)

unlock / lock
 plastic, black / die-cast
 300 g/each



Abb. / Illus. 1

602 N891 mit geschlossenem Griff (Abb. 1)
602 G087 mit offenem Griff (Abb. 2)

Türaußengriff (auf Anfrage)

- vorgerichtet ohne Zylinder
- Griff umlaufend am Fahrzeug einsetzbar
- Befestigungsbügel im Lieferumfang enthalten
Kundenseitig abgestimmt auf Wandstärke
- Befestigungsschrauben Eject PT 60x18-Torx und 4 Klipse für Betätigungsstangen beigelegt
- Vormontierte Zellgummi-Dichtung
- Alternativ: Innenbetätigung über separate Griffkombination – siehe Abbildung
- Direkte Ver- und Entriegelung von Innen möglich über Bedienungsbolzen
- Alternativ: Ver- und Entriegelung über Betätigungsstange mit Kunststoffkappe
- Elektromotorische Zentralverriegelung – 12 V und 24 V – möglich

Kunststoff, schwarz / Stahl verzinkt
 350 g/St.

Gesondert bestellen:
 Schlüssel und Zylinder siehe Seite 4 oder 5



Abb. / Illus. 2

602 N891 with closed handle (Illus. 1)
602 G087 with open handle (Illus. 2)

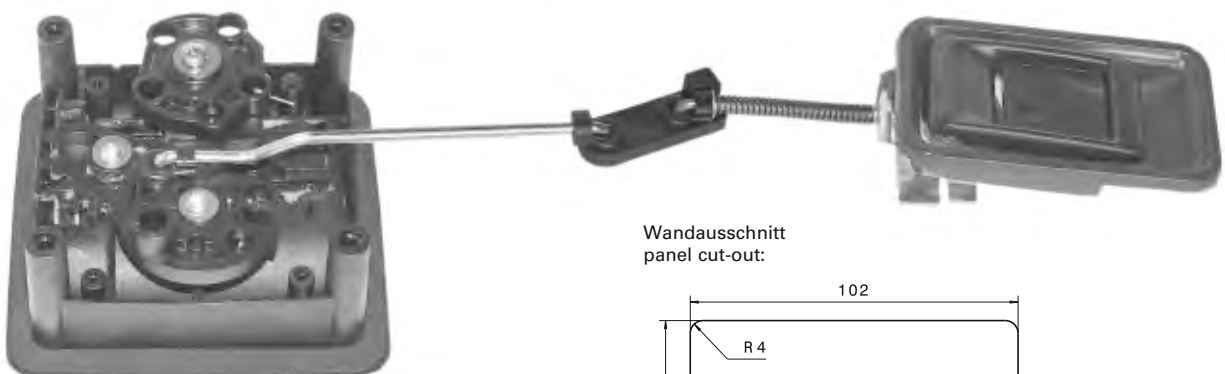
Exterior door handle (on request)

- designed for locking system but without cylinder
- Suitable for applications all round the vehicle
- Supplied with fastening bracket, can be customised to accommodate specific wall thickness
- Includes Eject PT 60 x 18 Torx fastening screws and 4 clips for attaching actuating rods
- Cellular rubber gasket pre-assembled
- Alternative: Interior actuator of a separate handle combination, refer to illustration
- can be locked or unlocked from inside by means of control bolts
- Alternative: by means of actuating rods with plastic caps
- 12 V and 24 V electrically powered central locking unit available

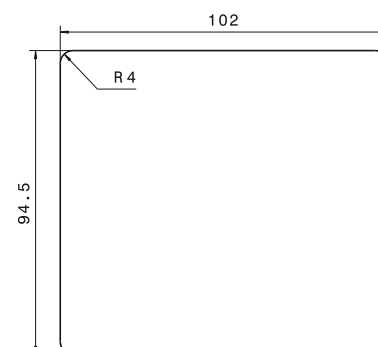
plastic, black / zinc-plated steel
 350 g/each

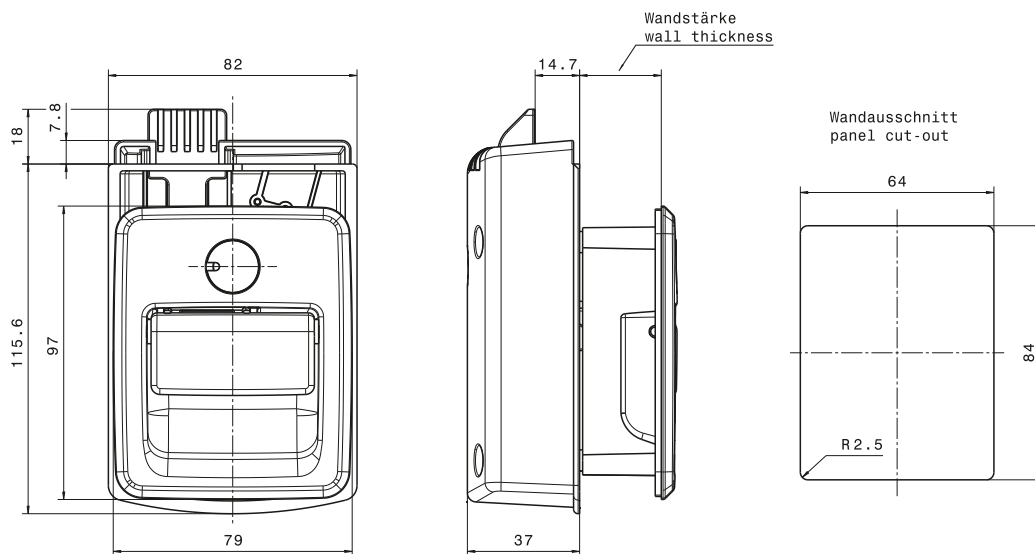
Order separately:
 locking cylinder and key refer to page 4 or 5

Griff mit Innenbetätigung Handle with interior actuator



Wandausschnitt
 panel cut-out:





- 602 N774** Wandstärke 27 mm
- 602 N775** Wandstärke 30 mm
- 602 N790** Wandstärke 35 mm
- 602 N713** Wandstärke 40 mm

- 602 N774** wall thickness 27 mm,
- 602 N775** wall thickness 30 mm
- 602 N790** wall thickness 35 mm
- 602 N713** wall thickness 40 mm

Klappenverschluss mit Federriegel (auf Anfrage)

Flap lock with spring catch (on request)

Betätigungsart: manuell

Manual operation

Schließzylinderbuchse aus Kunststoff*

Plastic locking cylinder bush*

- vorgerichtet ohne Zylinder
 - Zweiteilig für einfache Montage, geeignet für Wandstärken von 27 mm bis 40 mm
 - Universell umlaufend in jeder Lage einsetzbar
 - 90° Drehung
 - Elektromotorische Zentralverriegelung – 12 V und 24 V – auf Anfrage
 - Vormontierte Zellgummi-Dichtung
- Kunststoff, schwarz / Stahl verzinkt
190 g/St.

- designed for locking system but without cylinder
 - Two parts facilitate installation, suitable for wall thickness from 27 mm to 40 mm
 - Universal applications all-round in any position
 - Reversible by 90°
 - Possible to connect them with electrically powered central locking unit – in 12 V and 24 V – on request
 - Pre-fitted cellular rubber gasket
- plastic, black / zinc-plated steel
190 g/each

Mindestabnahmemenge und Lieferzeit, auf Anfrage

Minimum sales quantity and delivery time, on request

* Schließzylinderbuchse aus Druckguss, auf Anfrage

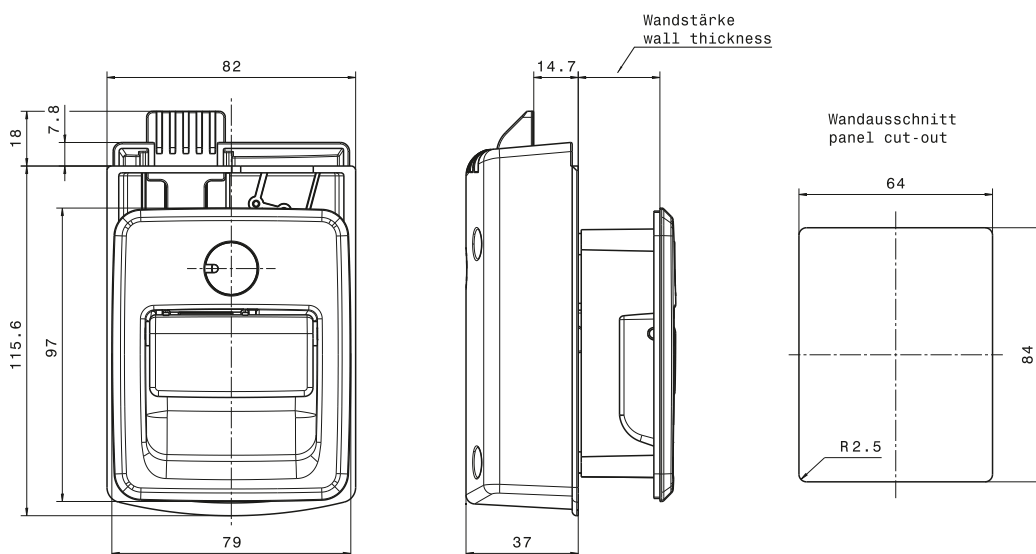
* Die-cast locking cylinder bush available, on request

Gesondert bestellen:

Order separately:

Schlüssel und Zylinder siehe Seite 4 oder 5

locking cylinder and key refer to page 4 or 5



- 602 N363** Wandstärke 27 mm
- 602 N364** Wandstärke 30 mm
- 602 N365** Wandstärke 40 mm

- 602 N363** wall thickness 27 mm
- 602 N364** wall thickness 30 mm
- 602 N365** wall thickness 40 mm

Universal Klappenverschluss (auf Anfrage)

Universal flap lock (on request)

Schließzylinderbuchse aus Kunststoff*

Plastic locking cylinder bush*

- vorgerichtet ohne Zylinder
- Zweiteilig für einfache Montage, geeignet für Wandstärken von 27mm bis 40mm
- Universell umlaufend in jeder Lage einsetzbar
- 90° Drehung
- Elektromotorische Zentralverriegelung 24 V – 12 V auf Anfrage
- Vormontierte Zellgummi-Dichtung

- designed for locking system but without cylinder
- Two parts facilitate installation, suitable for wall thickness from 27mm to 40mm
- Universal applications all-round in any position
- Reversible by 90°
- Possible to connect them with electrically powered central locking unit in 24 V – 12 V on request
- Pre-fitted cellular rubber gasket

Kunststoff, schwarz

plastic, black

Stahl verzinkt

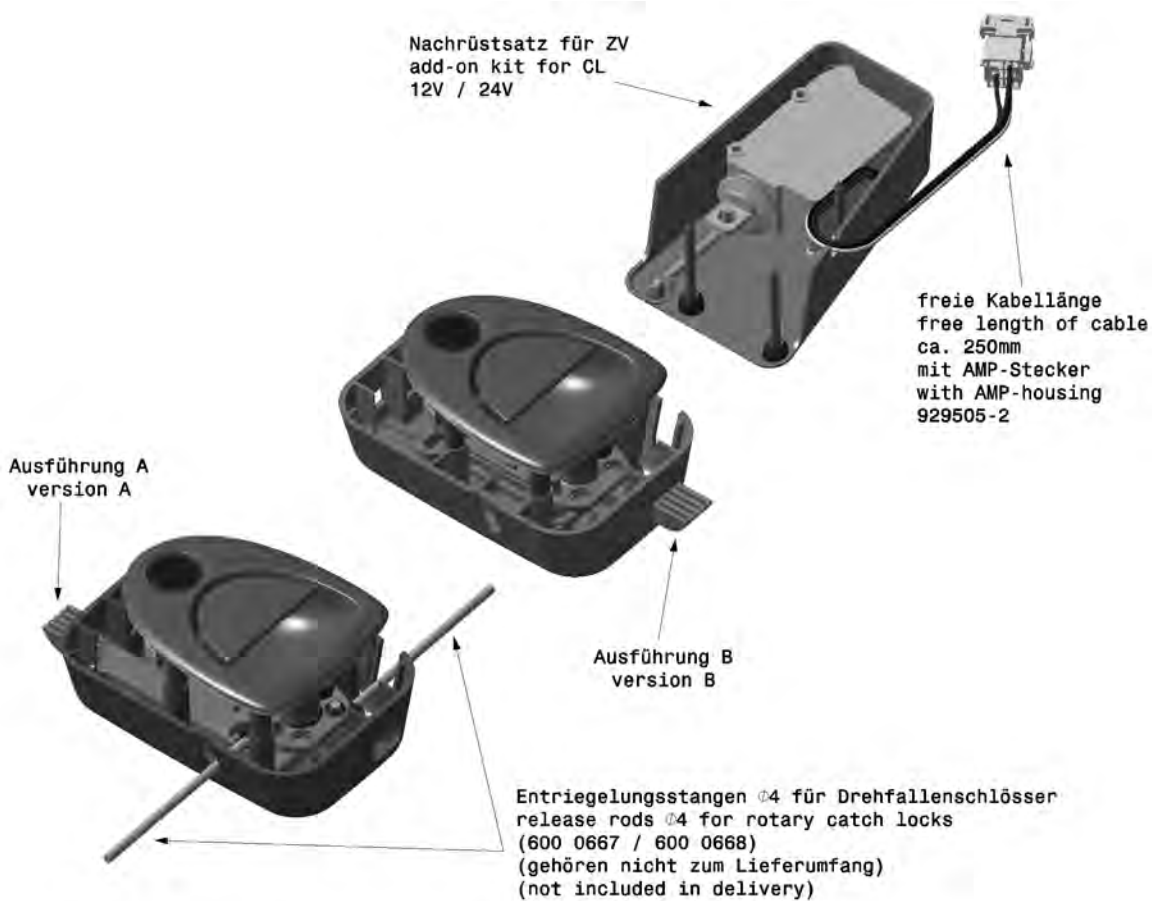
Zinc-plated steel

200 g/St.

200 g/St.

Mindestabnahmemenge und Lieferzeit, auf Anfrage
 * Schließzylinderbuchse aus Druckguß, auf Anfrage
 Gesondert bestellen:
 Schlüssel und Zylinder siehe Seite 4 oder 5

Minimum sales quantity and delivery time, on request
 * Die-cast locking cylinder bush available, on request
 Order separately:
 locking cylinder and key refer to page 4 or 5



Ausführung A

- 602 N814** Wandstärke 40 mm
- 602 N815** Wandstärke 35 mm
- 602 N816** Wandstärke 30 mm
- 602 N817** Wandstärke 27 mm

Ausführung B

- 602 N818** Wandstärke 40 mm
- 602 N819** Wandstärke 35 mm
- 602 N820** Wandstärke 30 mm
- 602 N821** Wandstärke 27 mm

Klappengriff mit Federriegel und Druckguss-Zylinderbuchse (auf Anfrage)

vorgerichtet ohne Zylinder
 mit EPDM-Zellkautschuk-Stanzdichtung
 Kunststoff PA 6 GF 30, schwarz
 Distanzhülsen (Wandstärken abhängig)

Gesondert bestellen:
 Schlüssel und Zylinder siehe Seite 4 oder 5
 Nachrüstsatz für ZV – 12 V und 24 V – auf Anfrage
 (Bitte Wand- und Türstärke bei Bestellung angeben)
 Kabelverlängerung 2200 mm mit einseitigem AMP-
 Gehäuse 929504-2, auf Anfrage

Version A

- 602 N814** wall thickness 40 mm
- 602 N815** wall thickness 35 mm
- 602 N816** wall thickness 30 mm
- 602 N817** wall thickness 27 mm

Version B

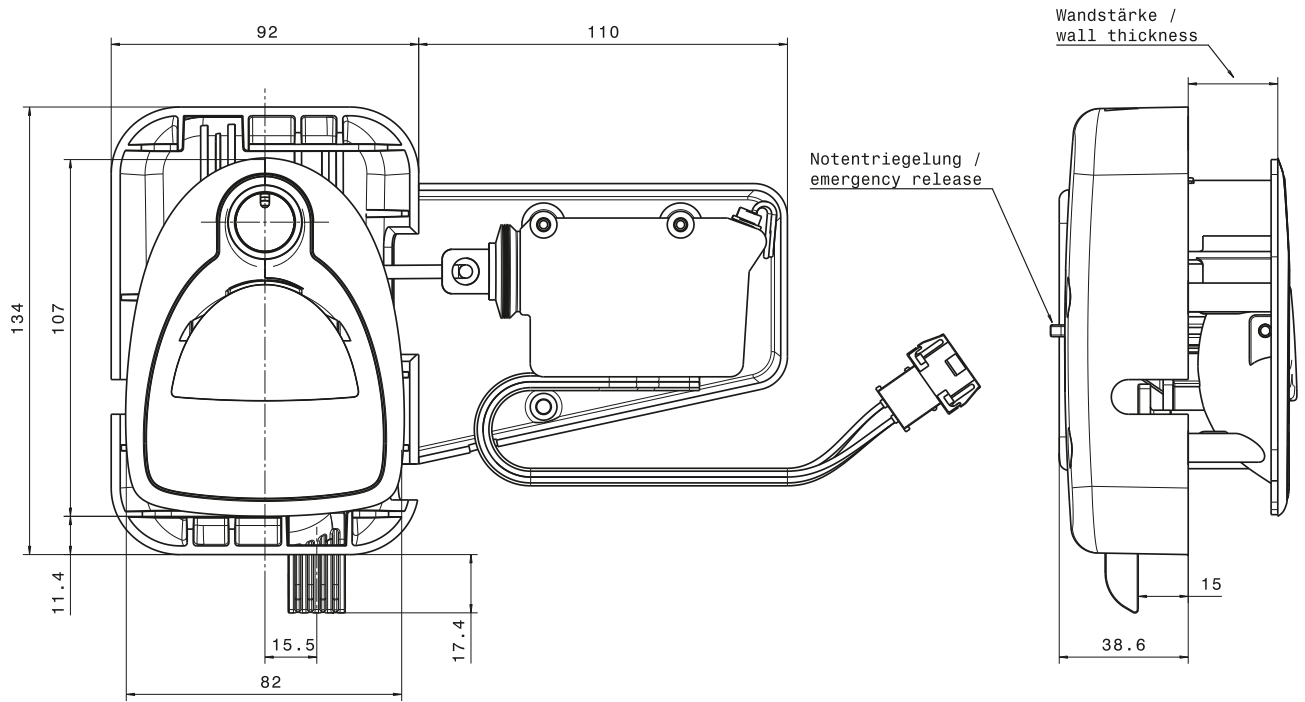
- 602 N818** wall thickness 40 mm
- 602 N819** wall thickness 35 mm
- 602 N820** wall thickness 30 mm
- 602 N821** wall thickness 27 mm

Flap lock with spring catch and die-cast cylinder liner (on request)

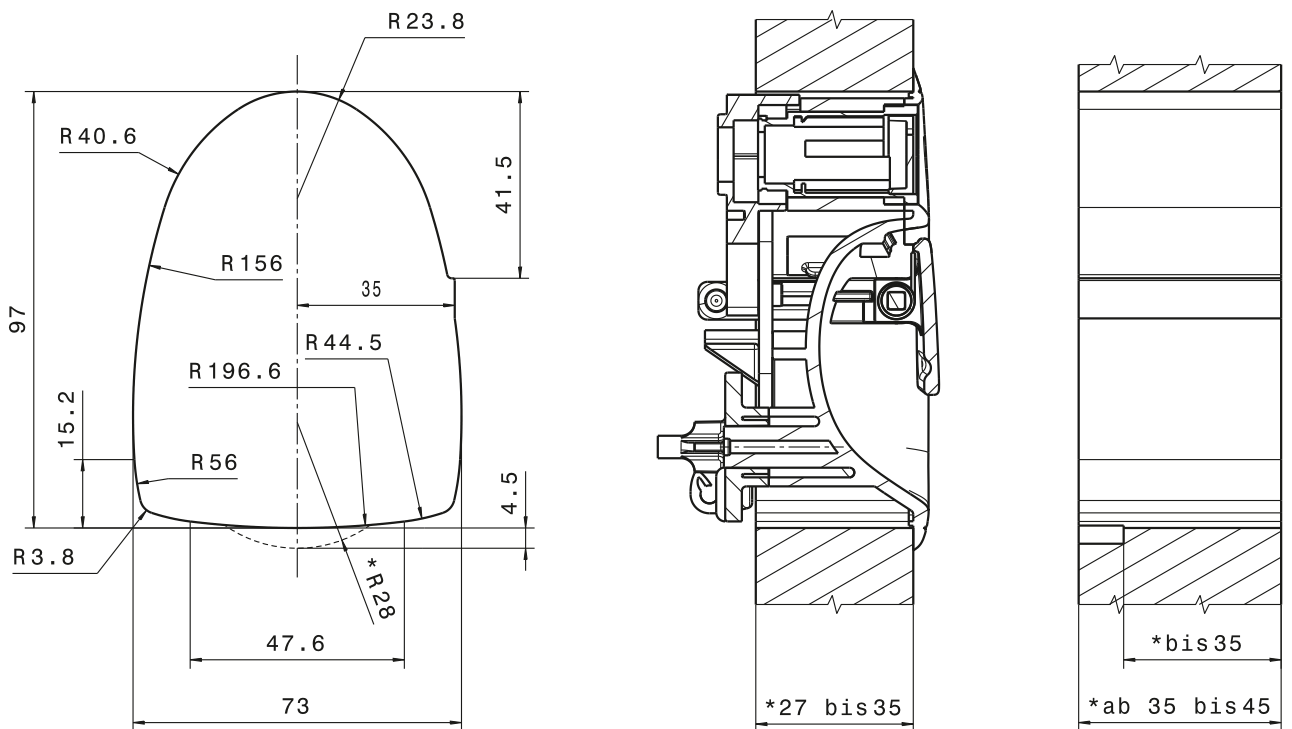
designed for locking system but without cylinder
 with stamped EPDM gasket
 plastic PA 6 GF 30, black
 Distance bushings (depending on wall thickness)

Order separately:
 locking cylinder and key refer to page 4 or 5
 add-on kit for CL – 12 V or 24 V – on request
 (Please indicate wall- or door thickness at order)
 cable elongation 2200 mm with one-sided AMP-housing
 929504-2, on request

Einbaumaße / Assembly dimensions

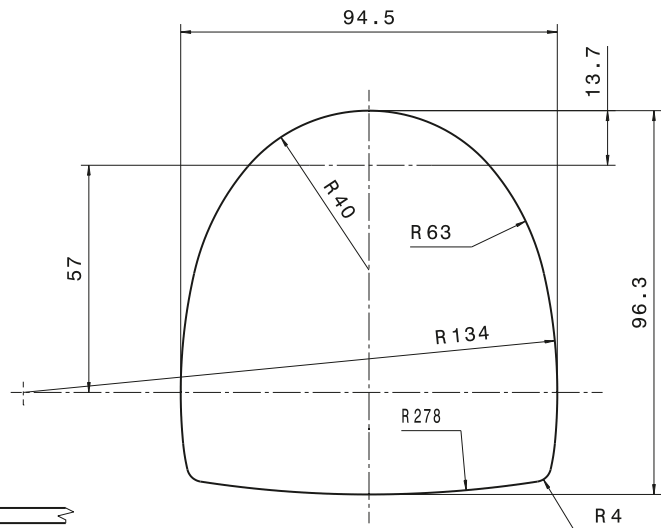
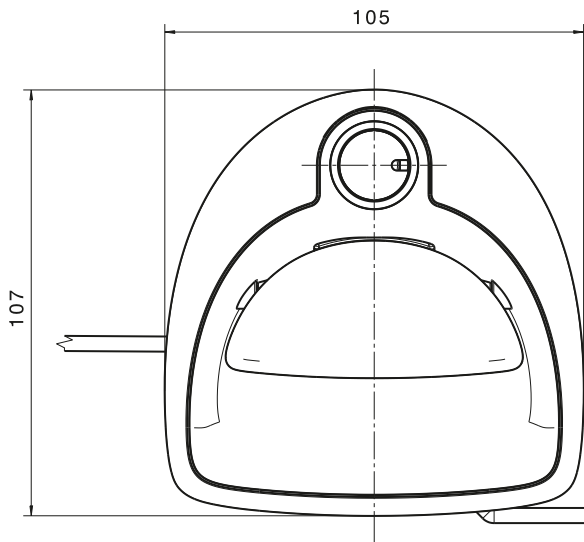


Wandausschnitt / Panel cut-out





Entriegelungsstangen Ø4 für Drehfallenschlösser (z.B. 600 0667 / 0668)
 release rods Ø4 for rotary catch locks (par ex. 600 0667 / 0668)
 (gehören nicht zum Lieferumfang)
 (not included in delivery)



- 602 N832** Wandstärke 35 mm
- 602 N833** Blechstärke 2 mm
- 602 N836** Wandstärke 35 mm, mit Zentralverriegelung 12 V
- 602 N837** Blechstärke 2 mm, mit Zentralverriegelung 12 V
- 602 N838** Wandstärke 35 mm, mit Zentralverriegelung 24 V
- 602 N839** Blechstärke 2 mm, mit Zentralverriegelung 24 V

- 602 N832** wall thickness 35 mm
- 602 N833** plate thickness 2 mm
- 602 N836** wall thickness 35 mm, with CL 12 V
- 602 N837** plate thickness 2 mm, with CL 12 V
- 602 N838** wall thickness 35 mm, with CL 24 V
- 602 N839** plate thickness 2 mm, with CL 24 V

Garagentürgriff mit Druckguss-Zylinderbuchse (auf Anfrage)

vorgerichtet ohne Zylinder
 mit EPDM-Zellkautschuk-Stanzdichtung
 Kunststoff PA 6 GF 30, schwarz
 Zentralverriegelungs-Ausführungen auf Anfrage

Gesondert bestellen:
 Schlüssel und Zylinder siehe Seite 4 oder 5
 Mindestabnahmemenge und Lieferzeit auf Anfrage

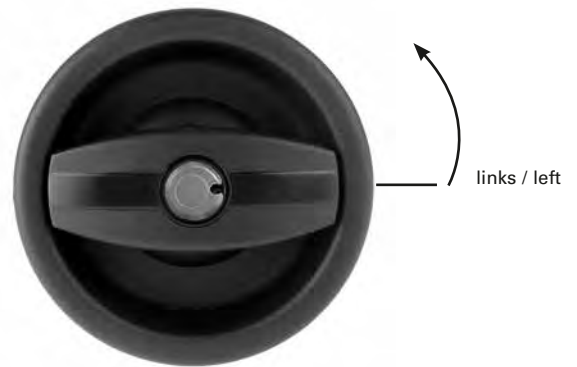
Garage door handle with die-cast cylinder bush (on request)

designed for locking system but without cylinder
 with stamped EPDM gasket
 plastic PA 6 GF 30, black
 Central locking unit on request

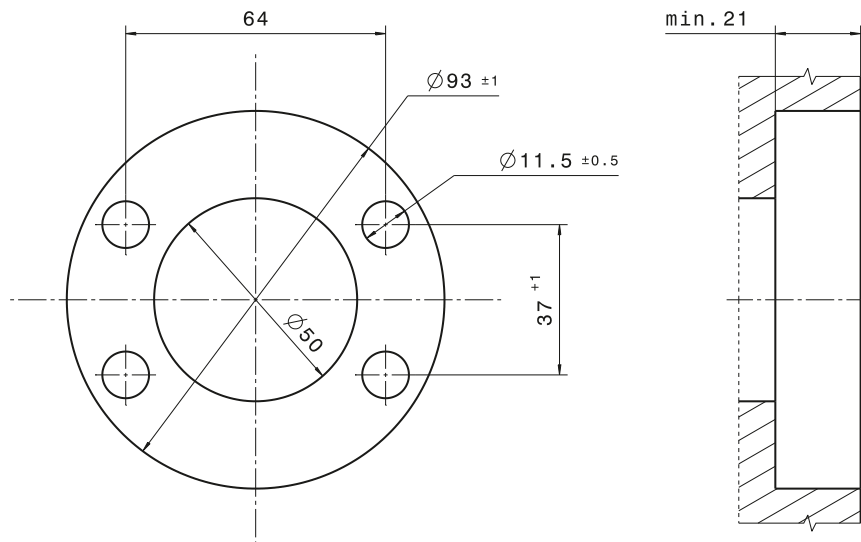
Order separately:
 locking cylinder and key refer to page 4 or 5
 Minimum sales quantity and delivery time on request



innen / inside



außen / outside



600 0657 links, (Abb.)

600 0658 rechts

Türschloss

Innenschloss mit Hebel, vorgerichtet
ohne Zylinder,
mit Mikroschalter für „Besetzt“-Anzeige
schwarz, mit Dichtung

Schloss und Griff: Polyamid, schwarz

Türstärke von 31 mm bis 35 mm, 35 mm bis 39 mm,
max. 47 mm

400 g/St.

VE 2 St.

Türstärke bei der Bestellung angeben

Gesondert bestellen:

Schlüssel und Zylinder siehe Seite 4 oder 5.

600 0657 left, (Illus.)

600 0658 right

Door lock

Interior Lock with handle, designed for locking system but
without cylinder
with micro switch for “Occupied” contact
black, with seal

Lock and handle: black polyamide

Door thickness from 31 mm to 35 mm, 35 mm to 39 mm,
max. 47 mm

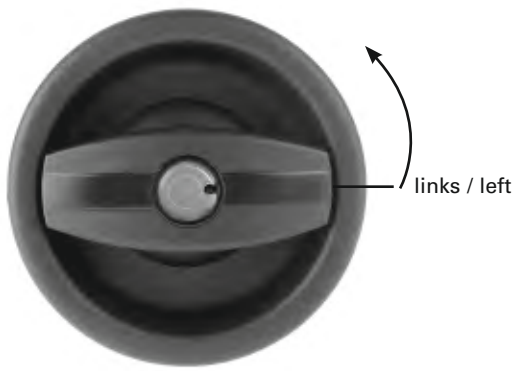
400 g/each

S.U. 2

Please state door thickness when ordering

Order separately:

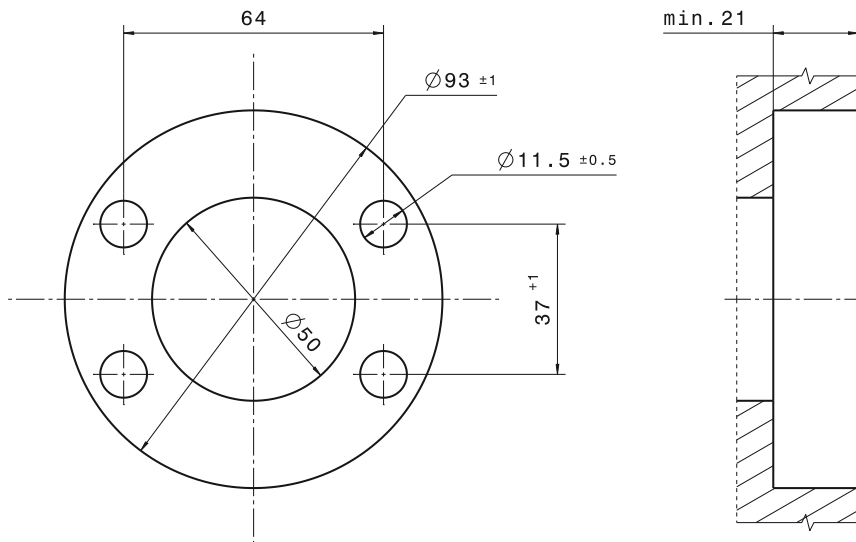
locking cylinder and key refer to page 4 or 5.



außen / outside



innen / inside



600 0655 links, (Abb.)
600 0656 rechts

Türschloss

Innenschloss mit Knauf, vorgerichtet
 ohne Zylinder
 mit Mikroschalter für „Besetzt“-Anzeige
 schwarz, abschließbar, mit Dichtung
 Schloss und Griff: Polyamid, schwarz
 Türstärke von 31 mm bis 35 mm
 400 g/St.

VE 2 St.

Türstärke bei der Bestellung angeben
 Gesondert bestellen:
 Schlüssel und Zylinder siehe Seite 4 oder 5.

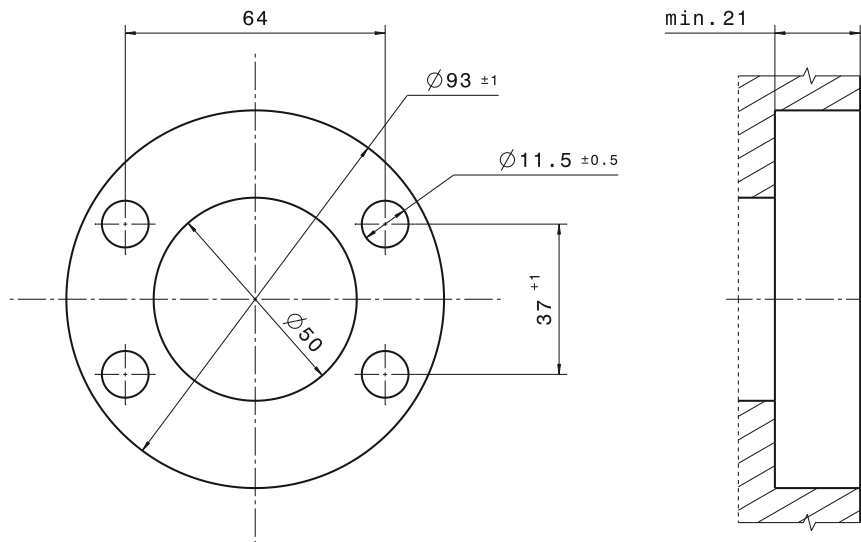
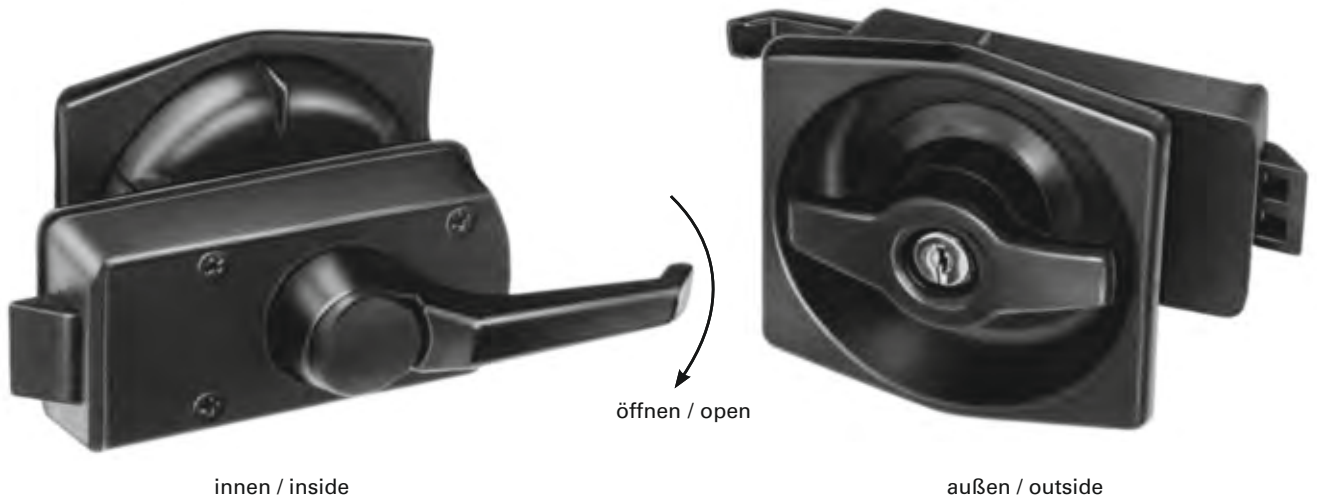
600 0655 left, (Illus.)
600 0656 right

Door lock

Interior lock with knob, designed for locking system but
 without cylinder
 with micro switch for “Occupied” contact
 black, lockable, with seal
 Lock and handle: black polyamide
 Door thickness from 31 mm to 35 mm
 400 g/each

S.U. 2

Please state door thickness when ordering
 Order separately:
 locking cylinder and key refer to page 4 or 5.



600 0611 2 mm Unterlagen
600 0612 10 mm Unterlagen

Türschloss

für Wohnwagen, schwarz
 abschließbar, verschiedenschließend, Serie GX mit
 2 Schlüsseln und Dichtung
 Schloss: Polyamid, schwarz
 Griff: GD Zn, schwarz beschichtet
 Schlüssel: Stahl
 Türstärke von 25 mm bis 40 mm
 400 g/St.

VE 5 St.

Türstärke bitte bei der Bestellung angeben

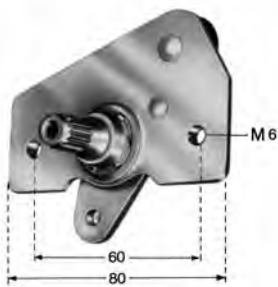
600 0611 2 mm Gaskets
600 0612 10 mm Gaskets

Door lock

for caravans, black
 Lockable, various key locking, system GX with
 2 keys and seal
 Lock: black polyamide
 Handle: black-coated die-cast Zn
 Key: steel
 Door thickness from 25 mm to 40 mm
 400 g/each

S.U. 5

Please state door thickness when ordering



600 0503 links, (Abb.), zu Schloss 600 0501 / 0499
600 0504 rechts, zu Schloss 600 0502 / 0500

600 0503 left, (Illus.), for lock 600 0501 / 0499
600 0504 right, for lock 600 0502 / 0500

Innenbetätigung

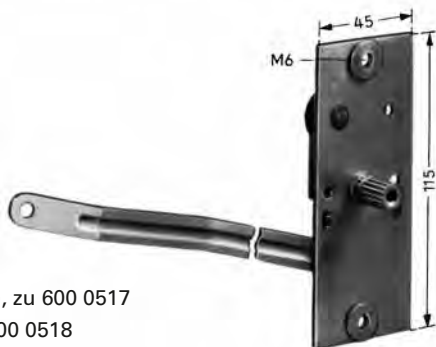
Stahl verzinkt
 110 g/St. VE 1 St.

Gesondert bestellen:
 Innengriff 580 0098

Interior actuator

Zinc-plated steel
 110 g/each S.U. 1

Order separately:
 Interior handle 580 0098



600 0213 links, (Abb.), zu 600 0517
600 0214 rechts, zu 600 0518

600 0213 left, (Illus.), for 600 0517
600 0214 right, for 600 0518

Innenbetätigung

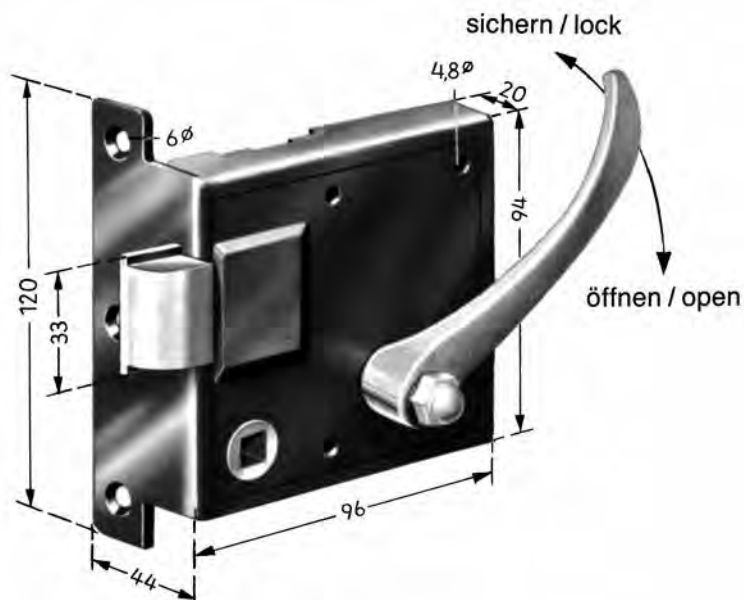
mit Verbindungsstange
 Stahl verzinkt
 283 g/St. VE 1 St.

Gesondert bestellen:
 Innengriff 580 0098

Interior actuator

with connecting rod
 Zinc-plated steel
 283 g/each S.U. 1

Order separately:
 Interior handle 580 0098



600 0093 links, (Abb.)
600 0094 rechts

Fahrerhaus-Aufschraubschloss

mit lose beigefügtem Innengriff,
 Sicherung auf Nuss und Falle
 Dornmaß ca. 15 mm
 Schloss: Stahl schwarz lack.
 Innengriff: GD Zn verchromt
 800 g/St.

VE 1 St.

Ersatzbedarf: Innengriff 580 0002

600 0093 left, (Illus.)
600 0094 right

Cab screw-on lock

with interior handle supplied separately,
 Locking via latch and follower
 Mandrel depth approx. 15 mm
 Lock: black painted steel
 Interior handle: chrome-plated die-cast Zn
 800 g/each

S.U. 1

Spares: Interior handle 580 0002



600 0206

Fallen-Aufschraubschloss

links und rechts verwendbar
 Dornmaß 25 mm
 Stahl verzinkt
 270 g/St.

VE 10 St.

Gesondert bestellen:
 Vierkantschlüssel 600 0155 – 0157

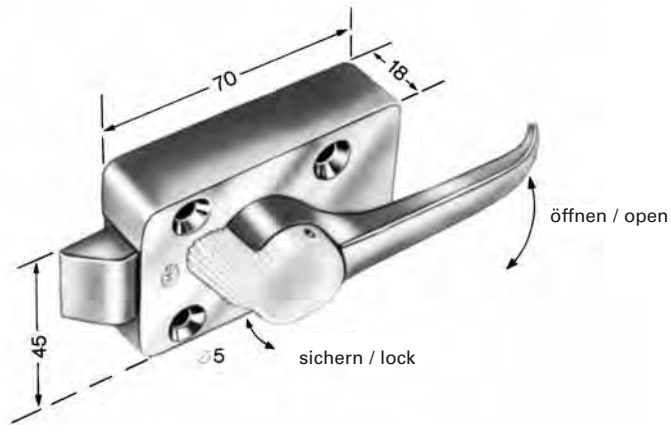
600 0206

Screw-on latch lock

applicable left or right
 Mandrel depth 25 mm
 Zinc-plated steel
 270 g/each

S.U. 10

Order separately:
 Square key 600 0155 – 0157



600 0402

Fallen-Aufschraubschloss

links und rechts verwendbar,
mit Innendrücker und Feststellvorrichtung
GD Zn verchromt, Innendrücker: AlMg pol.
380 g/St.

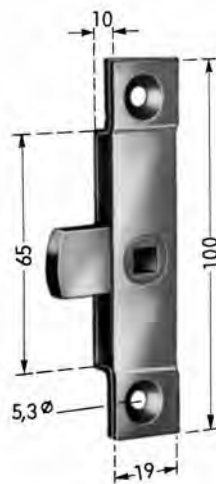
VE 5 St.

600 0402

Screw-on latch lock

applicable left and right,
complete with interior handle and retention device
Chrome-plated die-cast Zn, Interior handle: polished AlMg
380 g/each

S.U. 5



600 0384

Zungenschloss

Dornmaß ca. 9,5 mm
Stahl verzinkt
70 g/St.

VE 10 St.

600 0384

Latch lock

Mandrel depth approx. 9.5 mm
Zinc-plated steel
70 g/each

S.U. 10

Gesondert bestellen:
Vierkantschlüssel 600 0155 – 0157

Order separately:
Square key 600 0155 – 0157



600 0380

Zungenschloss

Dornmaß ca. 13 mm
 Stahl verzinkt
 145 g/St.

VE 10 St.

Gesondert bestellen:
 Vierkantschlüssel 600 0155 – 0157

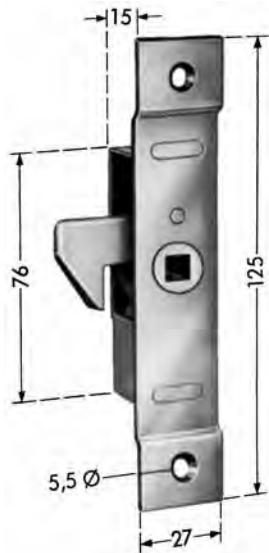
600 0380

Latch lock

Mandrel depth approx. 13 mm
 Zinc-plated steel
 145 g/each

S.U. 10

Order separately:
 Square key 600 0155 – 0157



600 0137 links
600 0138 rechts

Einlass-Schloss

für Schiebetüren, Dornmaß ca. 13 mm
 Stahl blank
 155 g/St.

VE 10 St.

Gesondert bestellen:
 Vierkantschlüssel 600 0155 – 0157

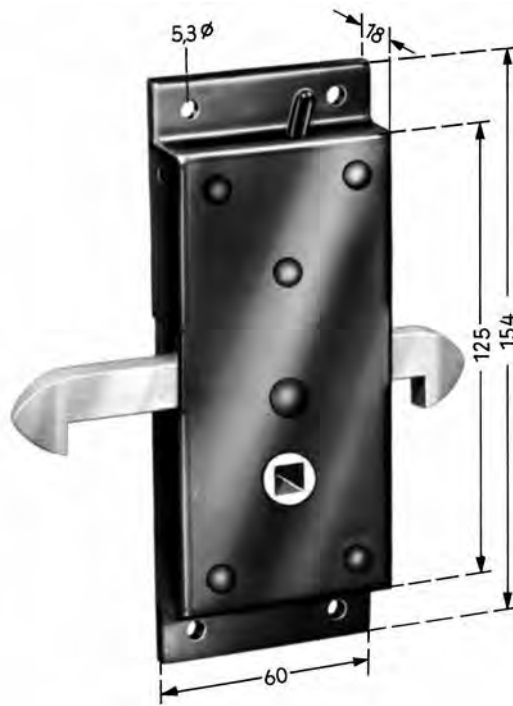
600 0137 left
600 0138 right

Recessed fitting lock

for sliding doors, Mandrel depth approx. 13 mm
 Bright steel
 155 g/each

S.U. 10

Order separately:
 Square key 600 0155 – 0157



600 0207 links
600 0208 rechts

Schiebetürschloss

Innensicherung durch Umlegen des Hebels
 Dornmaß ca. 30 mm
 Schloss: Stahl schwarz lack.
 Haken: GT verkadm.
 600 g/St.

VE 1 St.

Gesondert bestellen:
 Schließraste 600 0209

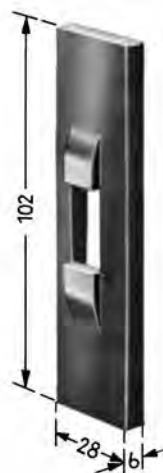
600 0207 left
600 0208 right

Sliding door lock

Interior locking by means of lever rotation
 Mandrel depth approx. 30 mm
 Lock: black painted steel
 Hook: cadmium-plated malleable casting
 600 g/each

S.U. 1

Order separately:
 Latch retention plate 600 0209



600 0209

Schließraste

zu 600 0207 / 0208
 links und rechts verwendbar
 GT roh
 120 g/St.

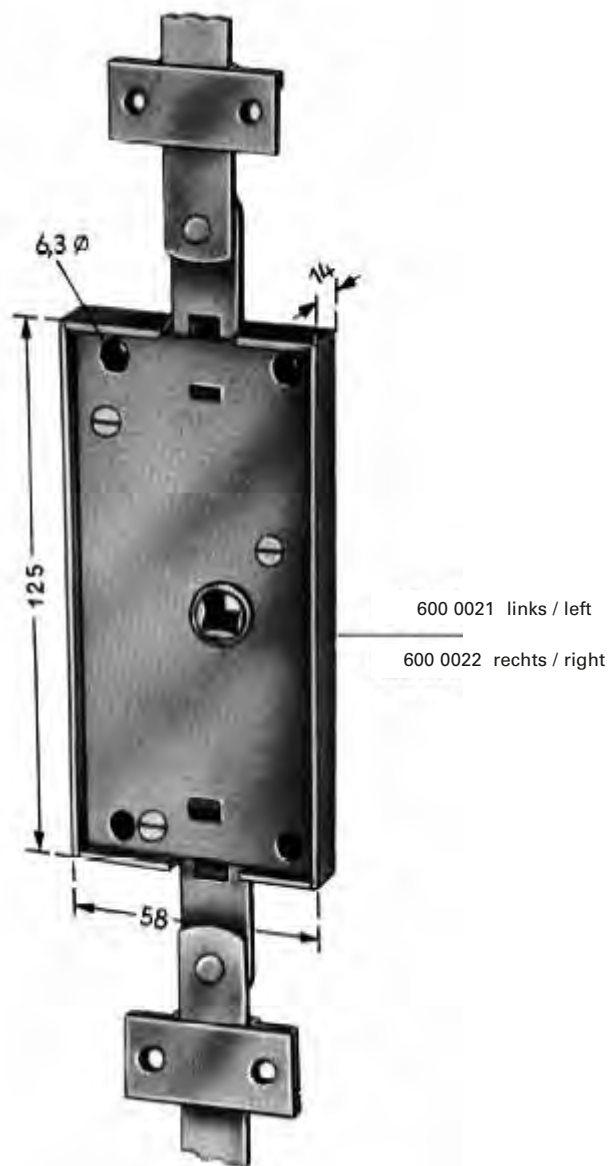
VE 1 St.

600 0209

Latch retention plate

for 600 0207 / 0208
 Applicable left and right
 Untreated malleable casting
 120 g/each

S.U. 1



600 0021 links, 350 g/St.
600 0022 rechts , 400 g/St.

Treibstangen-Schloss

Stahl verzinkt

VE 1 St.

Gesondert bestellen:
 Federriegel 602 0138, Stahl blank,
 150 g/St.

VE 2 St.

600 0021 left, 350 g/each
600 0022 right, 400 g/each

Bolt lock

Zinc-plated steel

S.U. 1

Oder separately:
 Spring catch 602 0138, bright steel
 150 g/each

S.U. 2



580 0002

Schloss-Innengriff

mit 8 mm Vierkantloch um 45° versetzt und
 Hutmutter M8 zu 600 0093 / 0094 / 0098
 Grifflänge 115 mm
 Griff: GD Zn verchromt
 Hutmutter: Stahl verchromt
 110 g/St.

VE 1 St.

580 0002

Interior lock handle

with 8 mm square hole offset 45° and
 M8 cap nut for 600 0093 / 0094 / 0098
 Handle length 115 mm
 Handle: chrome-plated die-cast Zn
 Cap nut: chrome-plated steel
 110 g/each

S.U. 1



580 0098

Schloss-Innengriff

mit Abdeckung und Riffelbuchse zu
 600 0213 / 0214 / 0503 / 0504
 Grifflänge 95 mm
 Griff: GD Zn verchromt
 Abdeckung: PVC schwarz
 88 g/St.

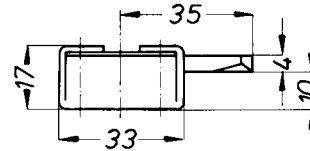
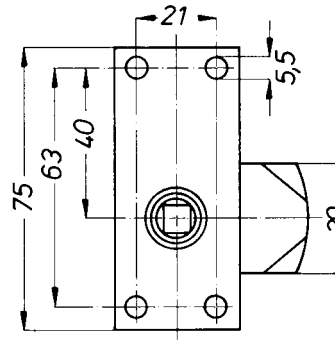
VE 5 St.

580 0098

Interior lock handle

with cover and grooved bush for
 600 0213 / 0214 / 0503 / 0504
 Handle length 95 mm
 Handle: chrome-plated die-cast Zn
 Cover: black PVC
 88 g/each

S.U. 5



600 0414

Zungenschloss

mit Federsperre
links und rechts verwendbar
Stahl verzinkt, chromatiert
153 g/St.

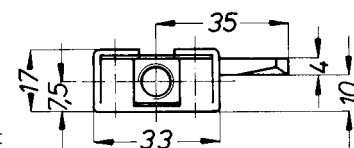
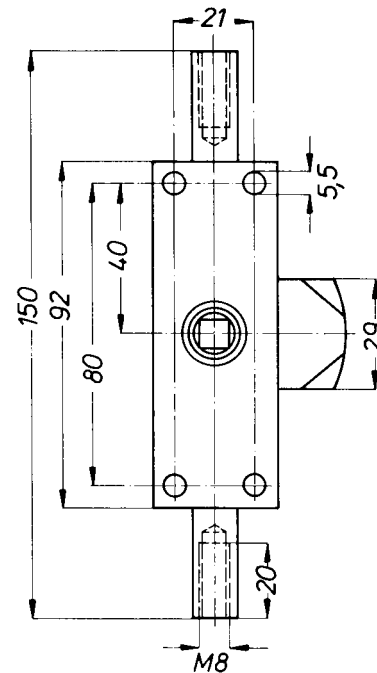
VE 2 St.

600 0414

Latch lock

with spring catch
for left or right hand application
Zinc-plated, chromated steel
153 g/each

S.U. 2



600 0415 links
600 0416 rechts

Stangenschloss

mit Federsperre
Stangenhub ca. 13,5 mm
Stahl verzinkt, chromatiert
280 g/St.

VE 2 St.

600 0415 left
600 0416 right

Rod lock

with spring catch
Rod travel approx. 13.5 mm
Zinc-plated, chromated steel
280 g/each

S.U. 2

Außenschwingtürverschlüsse Outward swinging door locks

Weston Body Hardware Ltd.

Crossgate Road
Park Farm Redditch B98 7SN
United Kingdom

Phone +44(0)1527 5160600

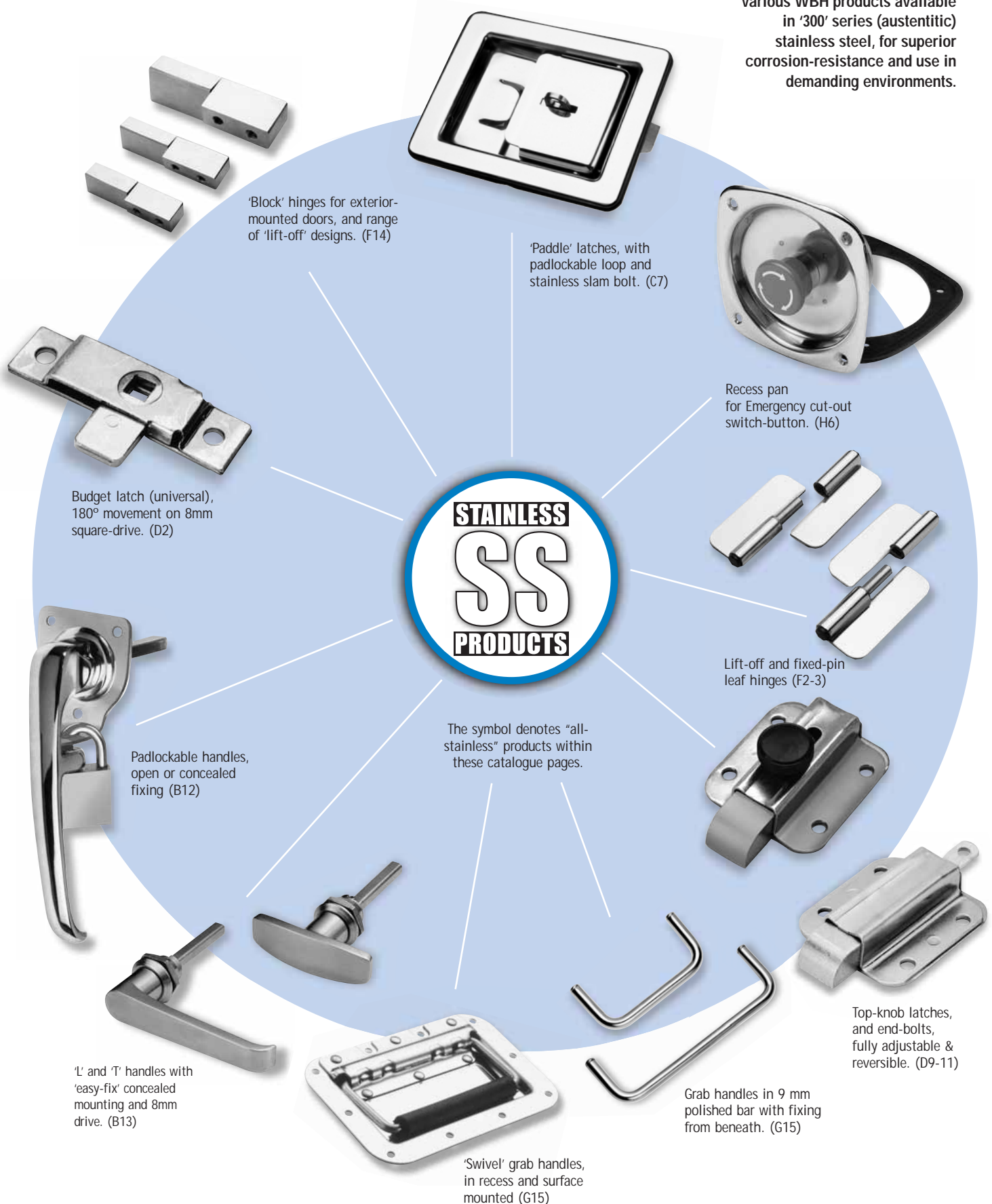
Fax +44(0)1527 5260600

E-Mail lockmaster@westonbodyhardware.com

www.westonbodyhardware.com

PRODUCTS IN STAINLESS STEEL

This is a quick guide to the various WBH products available in '300' series (austenitic) stainless steel, for superior corrosion-resistance and use in demanding environments.





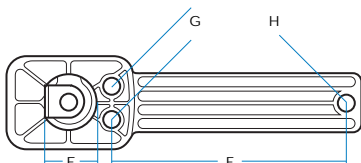
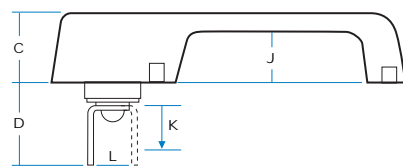
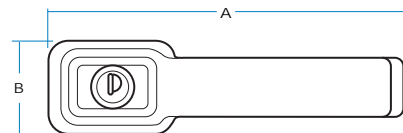
9/01900
Locking Handle



Double-sided 'FT' Keys are fitted as standard

ORDERING CODE

9/01900	Push-button handle, 'FT' locking
9/01900/01	Push-button handle, 'FT111' keys
9/01901	Push-button handle, non-locking



SPECIFICATION

A Length	183 mm
B Width (max)	47 mm
C Height	36 mm
D Projection (rest)	32 mm
E Diameter	28 mm
F Hole centres	120 mm
G Hole centres	18 mm
H Holes	M6 x 10 mm
J Grip height	28 mm
K Travel (vertical)	14 mm
L Travel (locking)	22 mm

Materials

Handle moulding in 30% glass filled acetal copolymer. Button in zinc alloy diecast, chromium plated. Contactor in steel, zinc plated.

Alternative Contactors:

See page A10 for latch-push dimensions and alternatives.



PUSH-BUTTON HANDLE

An attractively styled handle, suitable for all personnel and compartment doors, and moulded in impact-resistant material with textured finish. This is a 'free wheeling' design, so the handle can never be forced when the button is in the locked position.



Moulded push-button handle with diecast button and lock cylinder, providing good grip for gloved hand.



Steel contactor travels 14mm downwards when button is depressed. When locked, contactor cam rotates 180° out-of-position to disengage from the latch mechanism.



Fixing beneath into three brass inserts, threaded M6 x 10mm deep, gaskets provided.



Fitted with double-sided 'FT' keys. Can also be supplied with 'FS', '92' or DLP key styles.



Finish is self-colour black textured surface, bright chrome button.



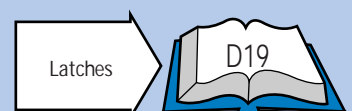
Special options include supply as pairs or sets, standard key number (FT111) or alternative contactor plates.



Moulded in 30% mineral-filled polyethylene



This handle is a direct alternative to Happich/DLP 580-0183 and Jagger 9300

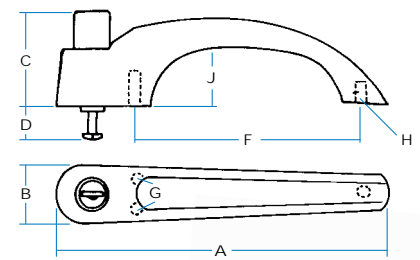




1/22788
'High-grip' handle

ORDERING CODE

1/22788	High-grip handle, locking, chrome
1/22788/01	As above, FS880
1/22789	High-grip handle, non-locking, chrome



SPECIFICATION

A Length	175 mm
B Width (max)	33 mm
C Height (max)	52 mm
D Projection	15 mm
F Hole centres	120 mm
G Hole centres	16 mm
H Hole sizes	M6 x 19 mm
J Grip height	35 mm
K Travel (vertical)	15 mm

An adjustment nut allows simple, on-site control of depth of travel of plunger screw.

DIECAST PUSH-BUTTON HANDLES

These two handles are 'blocked-action' models, so that when key is turned to lock, the button cannot be depressed.

The 'high-grip' design is essentially plant-on, with plunger operating through a good depth of travel. It suits tractors and commercial vehicles.

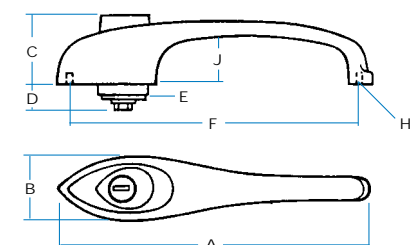
The 'classic' model has much lower projection but fits a flat panel and is widely used by 'kit' and specialist car builders.



1/07986
'Classic' push-button handle

ORDERING CODE

1/07986	Classic handle, locking, chrome
1/07987	Classic handle, non-locking, chrome
1/07988	As 1/07986, paired



SPECIFICATION

A Length	158 mm
B Width	30 mm
C Height (max)	35 mm
D Projection (rest)	12 mm
E Diameter	24 mm
F Hole centres	145 mm
H Hole sizes	1/4 BSF x 10 mm
J Grip height	19 mm
K Travel (vertical)	8 mm

Button operates vertical plunger, which is locked by turning key through 90°. Keys withdraw in 'open' & 'locked' positions.

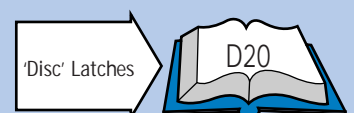
Both fixed from beneath into tapped holes. The 'classic' model requires panel cut-out.

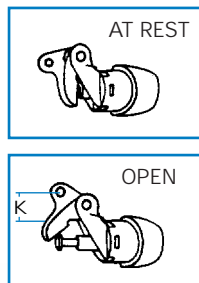
Chromium plated, or black powder coated handle with chrome button.

'FS' as standard with 'shuttered' keyway, optionally 'FT', '92' or 'DLP' key types. Non-locking models.

- Extended plungers
- Special key numbers/sets

Use with push-action latches, such as 'disc' latches 3/22142, etc.





1/24468 (LH)
'Limo' handle with
fitted bell-crank

ORDERING CODE

- 1/24467 'Limo' handle, RH, chrome
- 1/24468 'Limo' handle, LH, chrome
- 1/24466 'Limo' handles, Pair, chrome

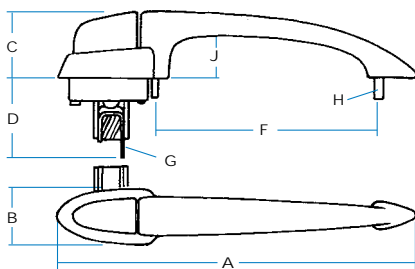


Illustration shows 1/24467, right-hand handle, with bell-crank operating upwards.

SPECIFICATION

A Length	187 mm
B Width (max)	25 mm
C Height (max)	35 mm
D Projection	45 mm
F Hole centres	117 mm
G Contactor hole	dia. 5 mm
H Studs (2)	10-32 UNF x 15 mm
J Grip height	30 mm
K Travel (horizontal)	45 mm

Note: Plunger screw allows adjustment of travel, position of bracket (up/down) determines 'handing'. Connecting clips (3/13390) and linkage rod (9/00078).

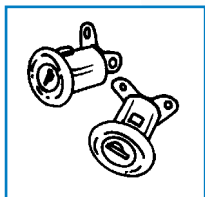
PUSH-BUTTON HANDLES FOR SEPARATE 'PRIVATE' LOCKS

These two diecast handles both require 'private' locks to be mounted separately on the door panel.

The 'bell-crank' design translates vertical movement into lateral 'pull', allowing handles to be fitted some distance away from latch mechanisms. They have been used on Jaguar, Triumph & Aston Martin cars.

The 'sports' models are simple, direct-action handles which must be mounted over the latch push-plate. They have been used on MG, Triumph and Panther cars.

Separate 'private' locks are required



9/00210
'Sports' handle



ORDERING CODE

- 9/00210 'Sports' handle, chrome, long stem
- 9/00212 'Sports' handle, chrome, short stem

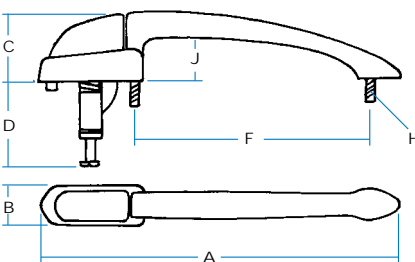


Illustration shows 9/00210, with 'long stem' and plunger support bracket.

SPECIFICATION

A Length	178 mm
B Width (max)	20 mm
C Height (max)	35 mm
D Projection	32 mm
F Mounting centres	117 mm
H Studs	10-32 UNF x 10 mm
J Grip height	23 mm
K Travel (vertical)	12 mm

Note: Plunger screw allows adjustment of travel. With 'short stem' model, projection 'D' is 8 mm.



Both are essentially plant-on, fixed from beneath with tapped holes and studs. Both require cut-outs for inside plunger details..

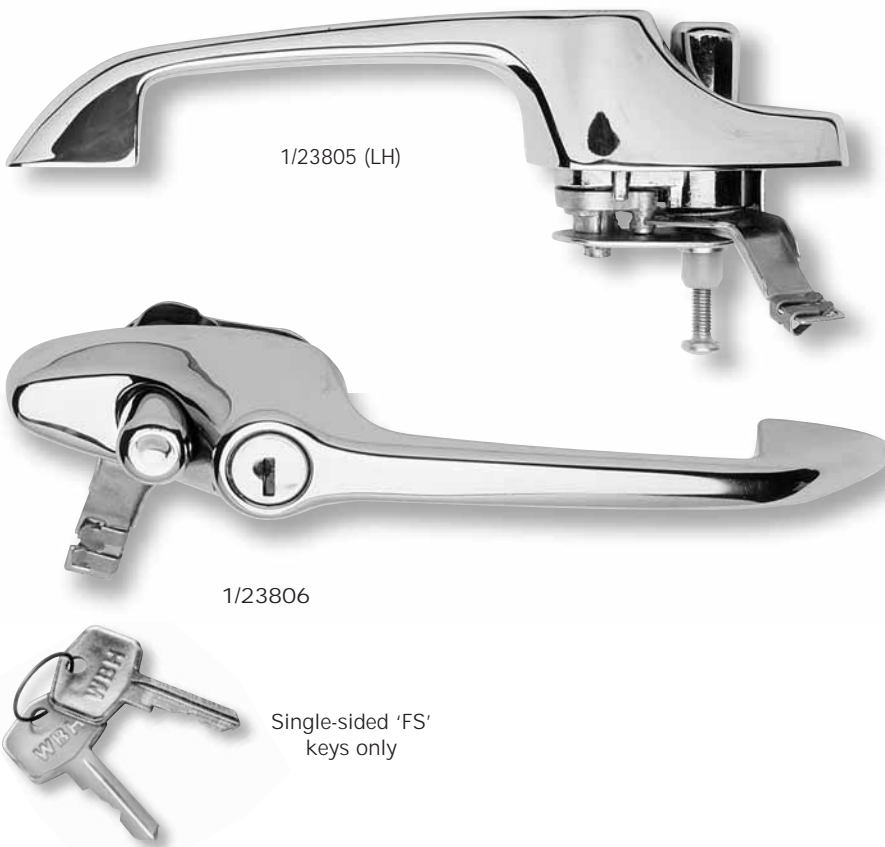


Chromium plated, or black powder coated.



- For 'bell-crank' handles use 'linkage-type' disc latches (3/15298-99) see D20
- For 'sports' handles use 'push-button' disc latches, (3/30476/7), see D21
- For 'private' door locks, (1/29400-1), see A9
- For inside releases, see E1-8

PUSH-BUTTON HANDLES FOR INTERCONNECTED DOOR SCHEMES



1/23805 (LH)

1/23806

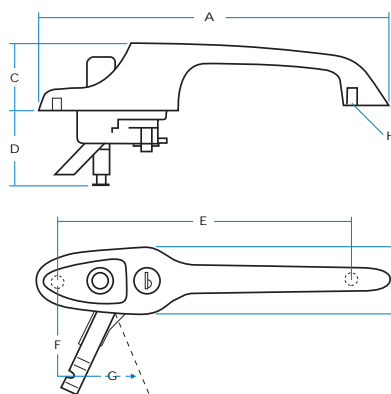
Single-sided 'FS'
keys only

ORDERING CODE

1/23805	Push-button handle, LH, chrome
1/23805B	Push-button handle, LH, black
1/23806	Push-button handle, RH, chrome
1/23806B	Push-button handle, RH, black
9/01062	Paired handles, chrome
9/01062B	Paired handles, black

Lever-end has spring-clip for 'push-on' engagement with 3.5 mm diameter operating rod on disc latch.

SPECIFICATION



A Total length	190 mm
B Width (max)	33 mm
C Height (max)	35 mm
D Plunger depth (rest)	28 mm
(extended)	44 mm
E Hole centres	160 mm
F Lever position ('locked')	45 mm
G Lever travel	45 mm
H Hole sizes	10-32UNF x 10 mm



Handle allows full interconnection of lock/latching functions, through body of latch to inside release.



When key is turned to locked position, button is 'blocked' and cannot be depressed. This also causes attached lever to travel through 'G' and operate the locking function within the door latch. Thus even if button is forced, latch will still not open. Adjustment feature on plunger. 'Lost-motion' allows door to be opened from inside even when handle is locked.



Fixed from beneath into two tapped holes. Cut-out required for inside plunger detail.



'FS' keys only with 'shuttered' keyway.



Chromium-plated or black powder-coated.



- Special key numbers/sets
- 'Customised' keys

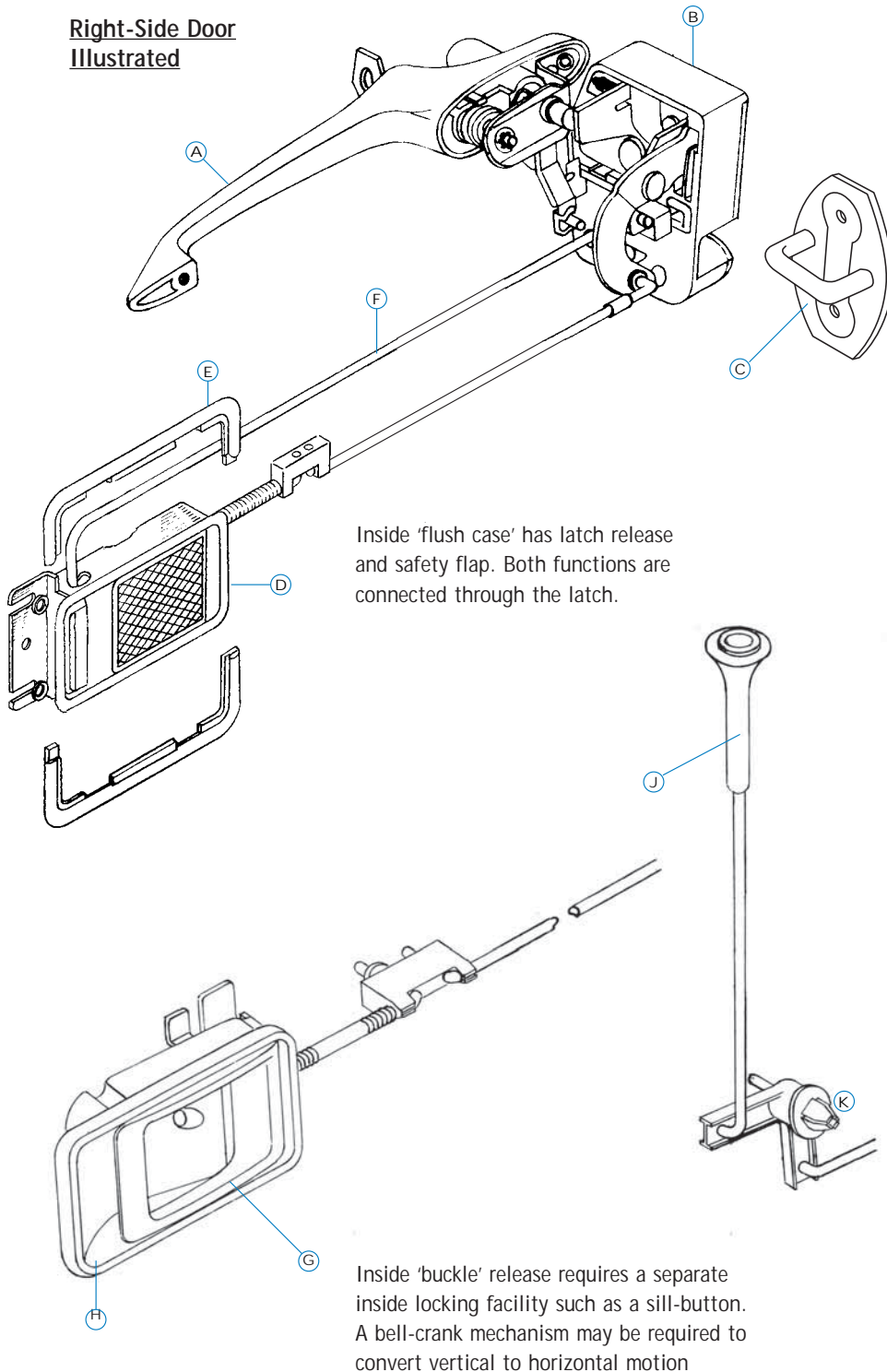


- Use with disc latches 3/30476-7 (see opposite)

INSTALLATION SCHEME

These handles and latches have been used for volume, on-road cars and vans over many years. The schemes allow **full interconnection** between inside and outside, with a 'locking' feature built into the latch. It is the vehicle manufacturer's responsibility to test and certify a fitted scheme.

Right-Side Door Illustrated



PUSH-BUTTON HANDLES - INSTALLATION SCHEMES

Handles allow fully interconnected inside and outside locking/latching, and these schemes will suit on-road passenger doors. Other items are described fully on the pages indicated.

Scheme with 'flush cases'
Items illustrated:

- A 1/23806 Outside handle, RH
- B 3/30476 Disc latch, RH
- C 3/21330 Plant-on striker
- D 1/29774 Flush-case, black, RH
- E 3/14422 Trim bezels, black
- F 9/00078 Connector rod

Scheme with 'buckle' release
Items illustrated:

- G 1/29908 'Buckle' release, chrome
- H 3/22324 Trim-bowl, black
- J 7/26668 Sill-button
- K 831398-9 Bell-crank assembly





Double-sided 'FT' keys only



1/25654 (Right-hand)
The connecting link between 'lock' and 'latch' points 'X' & 'Y' can be clearly seen.

DIECAST FLUSH 'FLAP' HANDLES

A sophisticated design, the 'Flap' handle is easy to fit and is widely used on all types of on-road vehicles. There are two modes of operation, either as a fully self-contained "freewheeling" handle, or with separate "isolated" lock and latch connection points.

ORDERING CODE

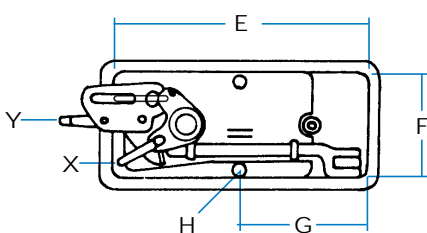
'Freewheel' handles

1/25654	Flap handle, RH, black & chrome
1/25654B	As above, all -black
1/25653	Flap handle, LH, black & chrome
1/25653B	As above, all-black
1/25673	Flap handles, pair, black & chrome
1/25673B	As above, all-black

'Isolated' handles

1/29344	Flap handle, RH, black & chrome
1/29344B	As above, all black
1/29345	Flap handle, LH, black & chrome
1/29345B	As above, all black
1/29346	Flap handles, pair, black & chrome
1/29346B	As above, all black

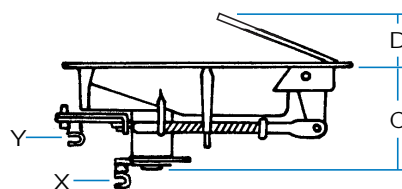
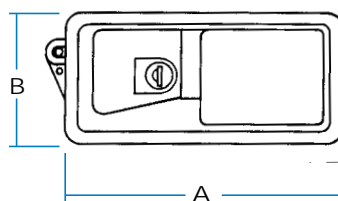
INSIDE VIEW OF HANDLE (LH)



Studs are mounted in diecast bosses to clear operating plunger. Inside rim width is 6 mm. Recommended cut-out size 57 mm x 135 mm. Gasket rim width is 8 mm.

SPECIFICATION

RIGHT-HAND HANDLE ILLUSTRATED



A Case length	145 mm
B Case width	67 mm
C Maximum depth	50 mm
D Maximum flap height	32 mm
E Inside length	133 mm
F Inside width	55 mm
G Location to studs	65 mm
H Studs	10-32 UNF x 10 mm
X Maximum travel of locking point when key is rotated	is 18 mm
Y Maximum travel of latching point when flap is lifted	is 15 mm



With "Freewheeling" model, action of the key cylinder disengages latch release via connecting link. With "isolated" model, key cylinder must be connected separately to a suitable latch.



Turn key and lift flap to rotate connection points 'X' and 'Y'. The lock cylinder has 'private lock' movement with 45° 'lost motion'.



Handle is fitted from outside into panel cut-out and is secured against two threaded studs, (nuts supplied) using 'U'-bracket or inner structural member. A moulded gasket is provided.



Double-sided 'FT' keys only.



Black case and chromium-plated flap with 'stippled' finish: alternatively, all black.



Special key numbers/sets 'Customised' keys Colour finishes (volume permitting)

INSTALLATION SCHEME - A - "AMERICAN" PRACTICE

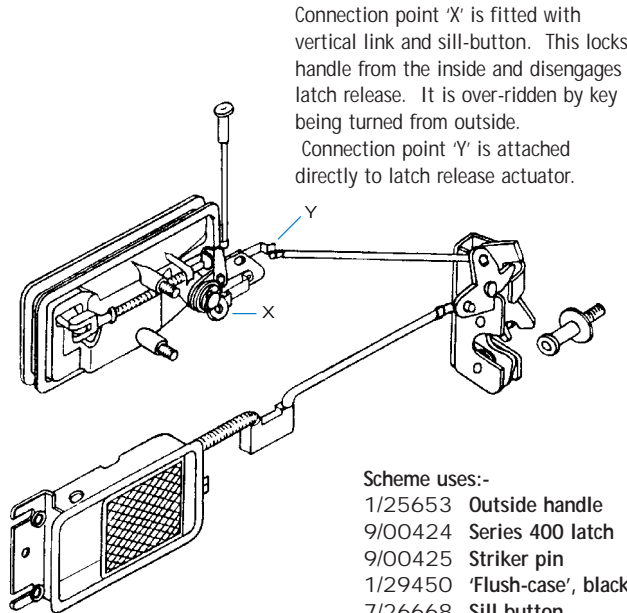
With scheme 'A', locking takes place within the outside handle, allowing a relatively simple latch to be used. This system is popular for Recreational Vehicles and small trucks.

Typical door layout using 'Freewheeling' handle with linked/latch functions.

Right-Side Door Illustrated

To achieve the correct movements, outside handles must be reverse-mounted. Thus the normal 'LH' handle is used for right-side door fitting.

Inside "Flush-case" has latch release only, with **no** safety flap. As an alternative use our "Buckle" design.



Connection point 'X' is fitted with vertical link and sill-button. This locks handle from the inside and disengages latch release. It is over-riden by key being turned from outside.
Connection point 'Y' is attached directly to latch release actuator.

- Scheme uses:-
- 1/25653 Outside handle
 - 9/00424 Series 400 latch
 - 9/00425 Striker pin
 - 1/29450 'Flush-case', black
 - 7/26668 Sill button
 - 3/14422 Inside trim bezels (not shown)

'FLAP' HANDLES - INSTALLATION SCHEMES

Our 'Flap' handles allow fully interconnected inside and outside locking/latching, and these schemes will suit on-road passenger doors.

The terms 'American' and 'European' practice signify only the favoured application methods. The schemes may be used anywhere! It is the vehicle manufacturer's responsibility to test and certify a fitted scheme.

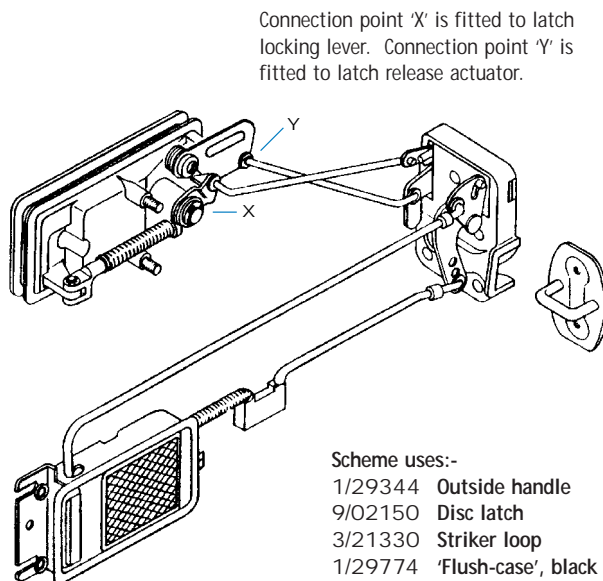
INSTALLATION SCHEME - B - "EUROPEAN" PRACTICE

In scheme 'B', locking is done through 'blocking' features within the latch. This system is used on passenger cars, light commercials, and for auxiliary doors on recovery vehicles.

Typical door layout using 'isolated' handle with separate lock/latch functions. Right - side door.

Right-Side Door Illustrated

Inside "Flush-case" has latch release **and** safety flap. Both functions are connected through the latch.



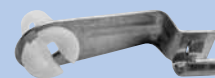
Connection point 'X' is fitted to latch locking lever. Connection point 'Y' is fitted to latch release actuator.

- Scheme uses:-
- 1/29344 Outside handle
 - 9/02150 Disc latch
 - 3/21330 Striker loop
 - 1/29774 'Flush-case', black
 - 3/14422 Inside trim bezels (not shown)

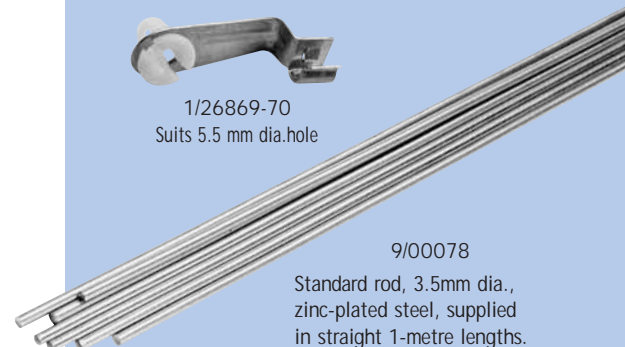
(Note: due to recent design improvement, latch does not correspond exactly to illustration.)

SILL BUTTON & FITTINGS

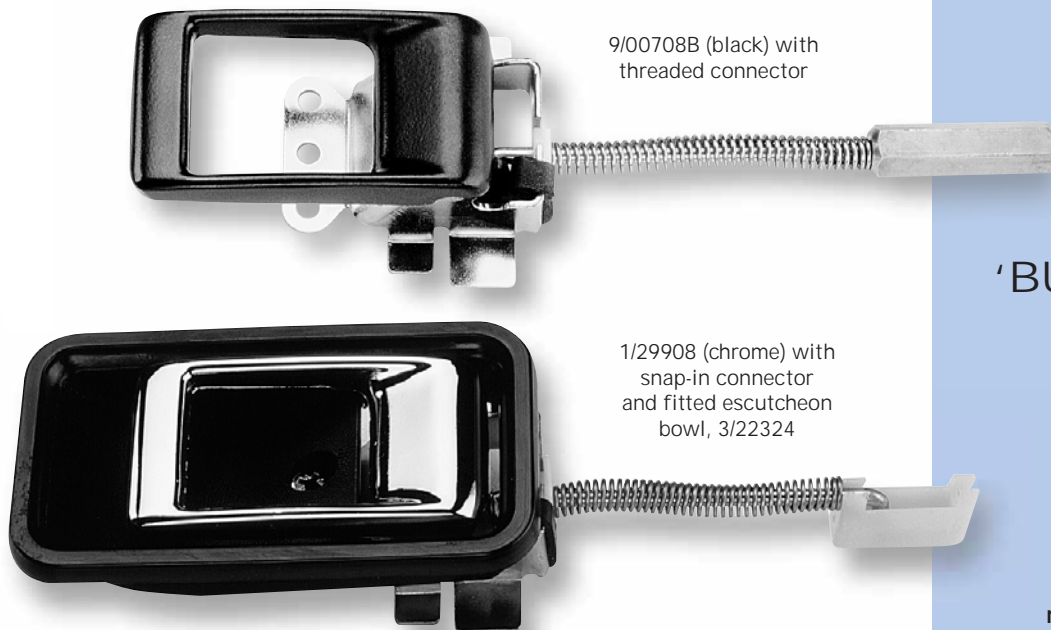
7/26668 sill button
Moulded in black ABS with plain core, self-taps onto thread-rolled rod (increased to 4.2 mm diameter)



1/26869-70
Suits 5.5 mm dia.hole



9/00078
Standard rod, 3.5mm dia., zinc-plated steel, supplied in straight 1-metre lengths.



9/00708B (black) with threaded connector

1/29908 (chrome) with snap-in connector and fitted escutcheon bowl, 3/22324

'BUCKLE' INSIDE RELEASE HANDLES

A neat, automotive design which is very easy to fix. There is no locking feature, so it is used on doors where inside locking is achieved by sill-button or other means. Two styles of connector as shown, non-handed.

ORDERING CODE

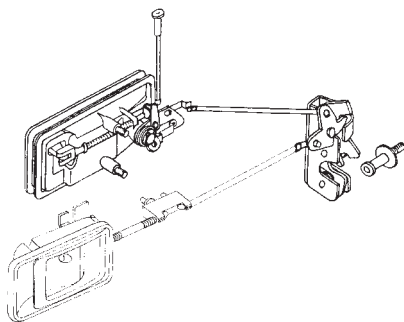
1/29908	'Buckle' release, chrome, (snap-in)
1/29908B	As above, black
9/00708	'Buckle' release, chrome (threaded)
9/00708B	As above, black
3/22324	Moulded escutcheon bowl, black
9/00078	Connector rod, 3.5 mm x 1 metre
7/26668	Sill-button, black

Special Models

Threaded connectors can be provided to alternative threads/lengths and with other features to facilitate attachment.

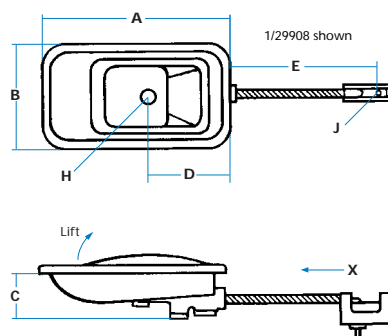
Installation of 'buckle' release

Illustration shows inside handle with simple connection to latch.



This is an installation using our outside 'flap' handle, 1/25653, with 'freewheeling' action. See section B.

SPECIFICATION



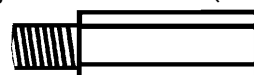
A	Bowl total length	102 mm
B	Bowl width	55 mm
C	Depth to base	23 mm
D	Location	45 mm
E	Location to 'J'	75 mm
H	Hole size (dia)	5 mm
J	Hole size (dia)	3.5 mm
X	Travel of latch release	15 mm

A rubber buffer on the frame acts as a stop, 'cushioning' action and preventing rattle.

Adjustable connector (9/00708, etc)

Hexagonal brass connector, length 40 mm, threaded 10/24 UNC (RH thread) allows 5 mm of adjustment.

Adjustable connector (9/00708)



Semi-plant-on for easy installation, cushioned action and choice of finish options.



Lift flap to withdraw latch connection point 'X'



Handle is bolted to inside door skin through base, and connected to latch. Trim panel is fitted, and moulded escutcheon is slipped over 'buckle' and secured through centre hole, concealing edges of panel.



Bright chromium-plated or black buckle, on zinc-plated frame. Black escutcheon.



Zinc diecast 'buckle' on steel frame, with bowl moulded in ABS.



Alternative connectors



Anti-burst latches (pages D20-21)



7/26668
sill button

Moulded in black ABS with plain core, self-taps onto thread-rolled rod (4.2 mm diameter)



1/29774 (RH)
illustrated with
trim bezels
3/14422

'FLUSH CASE' INSIDE RELEASE HANDLES with safety flap

Widely used through several generations of cars, vans and trucks, the 'flush-case' is strong, attractive, and easily fitted. There is a safety flap for internal locking, which provides visual indication that a door is secured.

! Semi-plant-on design for easy installation and adjustment, 'snap-in' connection, cushioned action, and wide choice of finish options.

W Lift flap to withdraw latch connection point 'X'. Safety flap operates separate connecting link to door latch, and blocks main flap.

M Handle is bolted to inside door skin through elongated hole/slots in brackets at each end. Link rods are pressed into connector block and into hole at (either) side of safety flap. Trim panel is fitted over handle, 2-piece bezels will conceal gaps.

W Case is powder-coated black or grey, or bright chromium plated. Standard moulded flaps are black or grey with 'quilted' pattern. Optionally, diecast main flap with smooth finish in black or chrome.

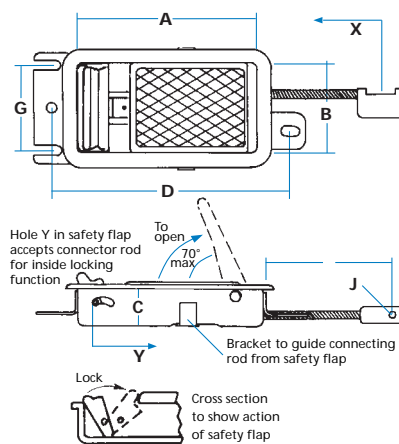
M Mild steel case with flaps moulded in ABS (or diecast main flap).

+ Use with 'disc' latches or similar (pages D20-21)

ORDERING CODE

1/29774	Flush case, RH, black
1/29775	Flush case, LH, black
3/15610	Flush case, RH, chrome/black flaps
3/15611	Flush case, LH, chrome/black flaps
3/15610/01	Flush case, RH, chrome/chrome flap
3/15611/01	Flush case, LH, chrome/chrome flap
3/14422	Trim bezel, black (2 required)
9/00078	Connector rod, 3.5 mm x 1 metre

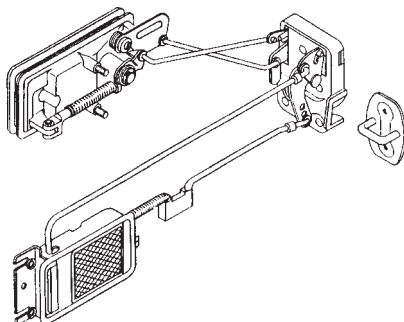
SPECIFICATION



A	Case length	112 mm
B	Case width	58 mm
C	Case depth	20 mm
D	Hole centres	145 mm
E	Location to 'J'	75 mm
F	Flange depth	15 mm
G	Location	50 mm
H	Hole size	6 x 12 mm
J	Hole size (dia)	3.5 mm
X	Travel of latch release	15 mm
Y	Travel of lock release	10 mm

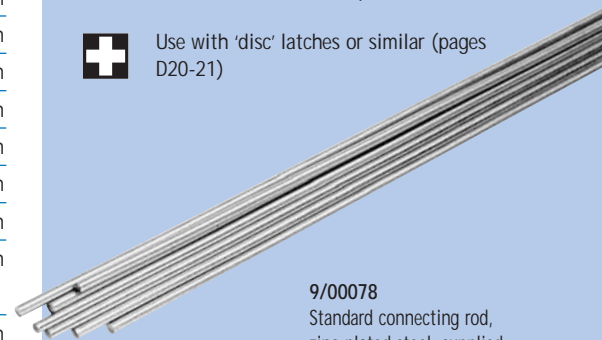
Installation of 'flush case'

Illustration shows right-side handle with fully interconnected action through door latch to outside handle (See 'Flap handles').



'Handing'

'Flush cases' are handed by position of connector block and small bracket.



9/00078

Standard connecting rod, zinc-plated steel, supplied in straight 1-metre lengths.



1/29902 (RH)
illustrated with
diecast chrome
flap and trim bezels
3/14422.

'FLUSH CASE' INSIDE RELEASE HANDLES without safety flap

These versions of the 'flush case'
suit internal doors where no safety
flap is required, or where inside
locking is achieved by other
means (for example, by sill-
button).

! Semi-plant-on design for easy installation and adjustment, 'snap-in' connection, cushioned action and wide choice of finish options.

W Lift flap to withdraw latch connection point 'X'.

M Handle is bolted to inside door skin through elongated hole/slots in brackets at each end. Trim panel is fitted over handle, 2-piece bezels will conceal gaps.

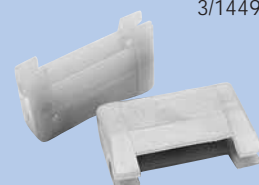
P Case is powder-coated black. Standard moulded flap is black with 'quilted' pattern, optionally, diecast with smooth finish in black or chrome.

M Mild steel case with flap moulded in ABS or zinc diecast.

? - Threaded connector for adjustment.
- Special models with extended travel ('X' = 26 mm)

+ Use with 'Series 400' latches or similar (page D18)

Connector block,
3/14493



Useful nylon connector which accepts two pieces of linkage rod.

ORDERING CODE

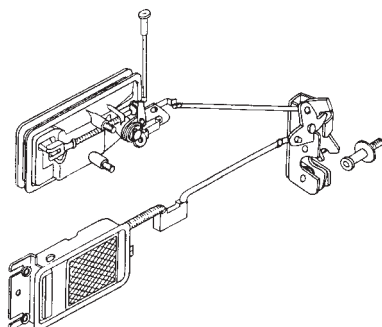
1/29450	Flush case, RH, black
1/29451	Flush case, LH, black
1/29902	Flush case, RH, black/chrome flap
1/29903	Flush case, LH, black/chrome flap
9/01013	Flush case, RH, threaded connector
9/01014	Flush case, LH, threaded connector
3/14422	Trim bezel, black (2 required)
9/00078	Connector rod, 3.5 mm x 1 metre

Special models

Using a different arrangement of operating links, connector travel ('X') can be increased to 25 mm for more positive latch release action (request 1/30601-2).

Installation of 'flush case'

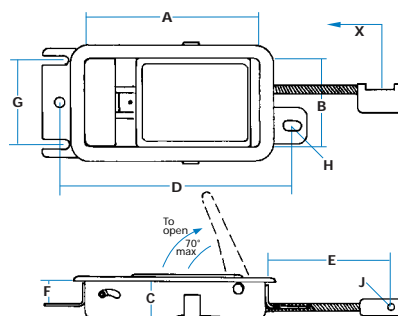
Illustration shows right-side handle with simple connection to latch (See 'Flap handles').



'Handing'

'Flush cases' are handed by position of connector block and small bracket.

SPECIFICATION



A	Case length	112 mm
B	Case width	58 mm
C	Case depth	20 mm
D	Hole centres	145 mm
E	Location to 'J'	75 mm
F	Flange depth	15 mm
G	Location	50 mm
H	Hole size	6 x 12 mm
J	Hole size (dia)	3.5 mm
X	Travel of latch release	15 mm

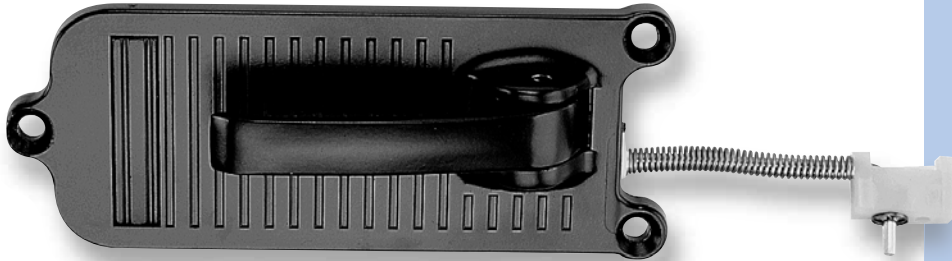
THREADED CONNECTORS



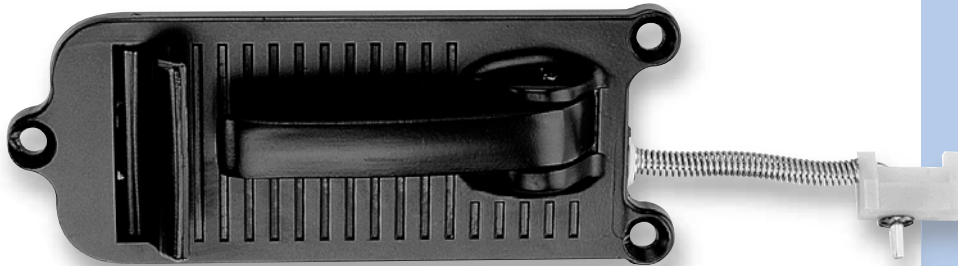
hexagonal
brass connector
threaded M6 (RH)



'WASHBOARD' INSIDE RELEASE HANDLES



9/01597 (RH)
illustrated



1/26650B (RH)
illustrated, showing
safety flap in
'locked' position

The 'washboard' release represents an evolutionary stage between conventional 'rotary' inside handles and fully-flush designs. It is a diecast unit with a 'pull-out' handle that affords good grip, while sitting low against the side of the vehicle when in rest position.

Originally made for luxury cars it also suits trucks and buses and can be supplied with or without safety flaps as illustrated.

! Semi-plant-on design for easy installation, 'snap-in' connection, cushioned action, can be polished and plated to high standards of finish.

W Lift flap to withdraw latch connection point 'X'. Safety flap (when fitted) operates separate connecting link to door latch, and blocks main flap.

M Handle is fitted to inside door skin, link rods are attached, and trim panel is applied over ends of handle to conceal bolts.

P Black powder-coated as standard, optionally bright chromium-plated.

M Zinc diecastings with steel connecting links.

? Alternative connectors.

+ Anti-burst latches (pages D20-21)

ORDERING CODE

1/26650B 'Washboard', with safety, RH, black

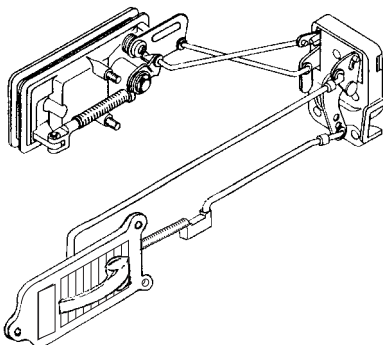
1/26649B 'Washboard', with safety, LH, black

9/01597 'Washboard', no safety, RH, black

9/01596 'Washboard', no safety, LH, black

Installation of 'washboard' release

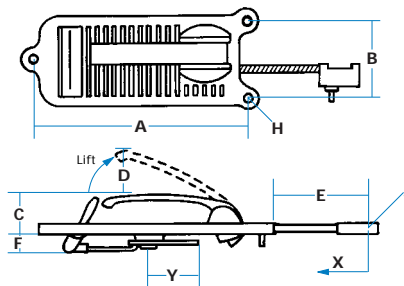
Illustration shows right-side handle with fully interconnected action through door latch to outside handle. With original scheme a push-button exterior handle was used.



'Handing'

Separate base castings, handed by position of connection points and release handle.

SPECIFICATION



A	Length (between centres)	155 mm
B	Width (between centres)	53 mm
C	Max height (at rest)	28 mm
D	Max. travel	50 mm
E	Location to 'J'	75 mm
F	Max. depth	15 mm
H	Hole sizes	6 mm (dia) c/s 12 mm
J	Hole size (dia)	3.5 mm
X	Travel of latch release	15 mm
Y	Travel of lock release	22 mm

Note: Lock release lever 'Y' has two attachment points, allowing for adjustment of linkages on site.

Linkage clips

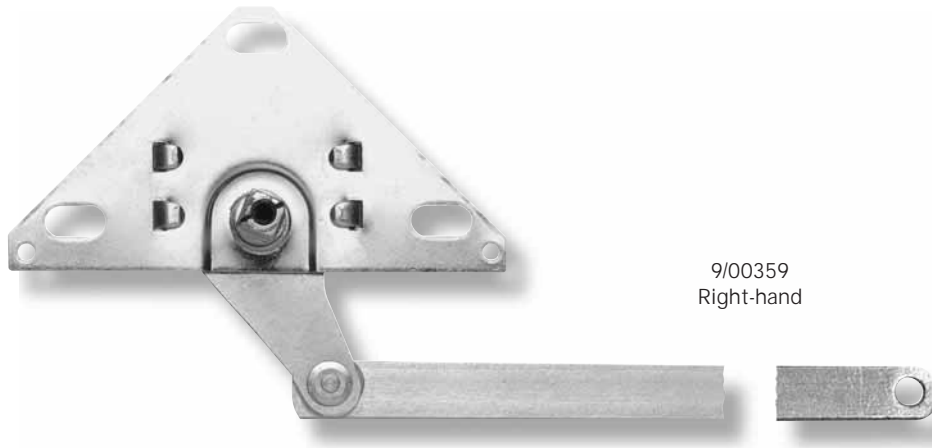
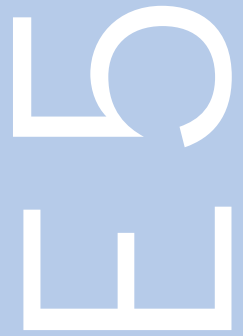


MP00519
Suits
4.75 mm dia. hole

1/26869-70

Suits 5.5 mm dia. hole

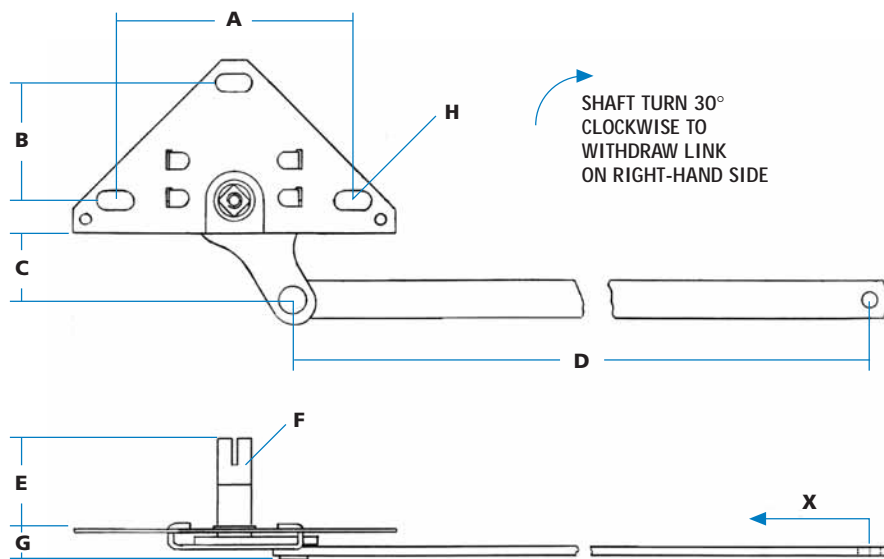
All accept standard connecting rod.








9/00359
Right-hand


'TRAIL-PLATE' INSIDE RELEASE & HANDLES


Highly versatile units which allow door latches to be operated from a handle some distance away. Particularly useful on wide doors, trucks, and off-road vehicles.



-  Units are 'handed' LH/RH with a 8 mm-square (5/16") spindle, aligned at 45° to vertical, with provision for safety locking (see below).
-  Pull inside handle as shown, withdrawing link bar and operating latch. Push in other direction to lock handle into a détente.
-  Install as shown to achieve correct movement on each side of vehicle. Units may be inverted to reverse movement of link bar.
-  Semi-plant on, with slotted holes for adjustment, and normally covered with trim panel.

 Zinc-plated mechanism. Handles are chromium-plated.

-  - Alternative spindles (length, alignment)
- Special link bars to order.

 Use with inside handles shown, and with rotary latches (D18) or similar.

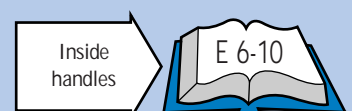
ORDERING CODE

9/00359 Inside release, RH

9/00360 Inside release, LH

SPECIFICATION

A Length (between centres)	80 mm
B Width (between centres)	40 mm
C Projection	22.5 mm
D Link bar	380 mm
E Spindle height	32 mm
F Spindle tapped	15 mm x 10-32 UNF
G Rear projection	10 mm
H Hole sizes	6 x 13 mm
X Travel of latch release	25 mm





Adaptor Shim
1/07995

This useful spring-steel adaptor allows inside handles on this page (9.5 mm square core) to be used with 8 mm square shafts.

Fixing screw handles have recessed hole to accept fixing screw, ref 24-16.

INSIDE RELEASE HANDLES

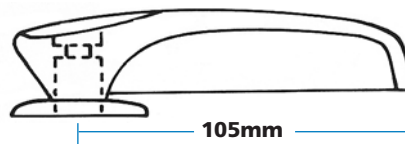
(Screw-Fixing to 9.5 mm square shaft)



1/24212
'Webbed' Style

NOTE: A matching window handle is available as 1/24214

1/24212



Height (max) - 28mm
Top recess 10mm diameter x 4mm deep

'Webbed' Style

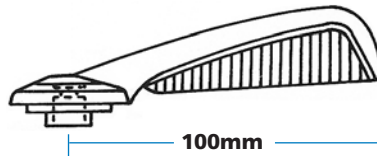
Strongly-styled handle with 'webbed' sidewall, in black ABS with chrome-plated diecast base-plate. Screw-fixed into 9.5mm (3/8") square core, in-line with axis.

(was BL 'mini', etc.)



1/08438
'Fishtail' Design

1/08438



Height (max) - 25mm
Top recess 13mm diameter x 4mm deep

'Fishtail' Design

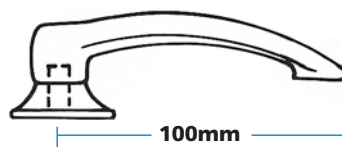
'Fishtail' design on sidewall, diecast and finished in bright chromium plating. Screw-fixed into 9.5mm (3/8") square core, in-line with axis. May require spacer ring, (5/01595).

(was Ford, Triumph, etc)



1/12000
'Traditional' Model

1/12000



Height (max) - 35mm
Top recess 8mm diameter x 5mm deep

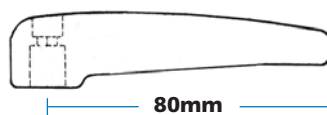
'Traditional' Model

'Traditional' model with high grip and integral skirt, diecast and chromium plated. Screw-fixed into 9.5mm (3/8") square core, in-line with axis.



1/11818
'Slimline' Handle

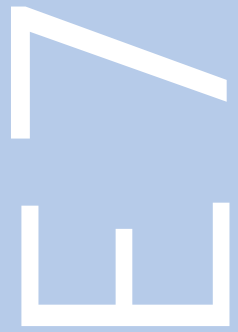
1/11818



Height (max) - 23mm
Top recess 8mm diameter x 10mm deep

'Slimline' Model

Very elegant little handle with low height and smooth sidewalls. Screw-fixed into 9.5mm (3/8") square core, in-line with axis.



INSIDE RELEASE HANDLES

(Screw-Fixing to 8mm square Shaft)

SN003



Standard 8 mm steel shaft, with chamfered corners, supplied in 150 mm lengths, bright zinc -plated

Moulded handle

5/01664
(black)



5/01664



Height (max) - 25mm
Top hole diameter 6mm,
countersunk 10mm

Moulded Handle

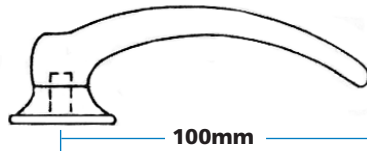
A small, tough, useful handle made in wear-resistant Acetal, with fine-sparked finish. Normal colour is black, red also available. 8mm square core, in-line with axis.

'Traditional' handle

1/11930
1/11930B



1/11930



Height (max) - 40mm
Top recess 13mm diameter x 4mm deep

'Traditional' Handle

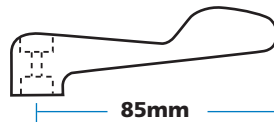
Diecast-handle with high grip and integral 'skirt'. Available in chrome or black powder-coated. 8mm square-core, in-line with axis

'Spade-end' handle

1/05171



1/05171



Height (max) - 30mm

'Spade-end' Handle

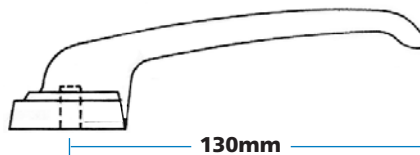
Diecast handle, useful for restricted spaces. Available in chrome only. 8mm square core, in-line with axis.

'Heavy-duty' handle

9/00801
9/00801B



9/00801



Height (max) - 40mm
'Skirt' diameter - 45mm

'Heavy-duty' Handle

A substantial handle developed for heavy trucks and also used for electrical control gear. Diecast, with chrome or black finish. 8mm square core, in-line with axis.



INSIDE RELEASE HANDLES CONCEALED-FIX MODELS



1/16420
Spring escutcheon
for 'traditional' handles
chrome plated

'Truncheon' Handles

9/00260
(chrome)



1/05459 (raw)
1/24188 (chrome)

1/05459 (raw, drive-fit)
9/00260 (chrome, screw-fix)



Height _____ (max) 40mm
Centre hole in top face (when supplied),
6mm x 10mm c/s.

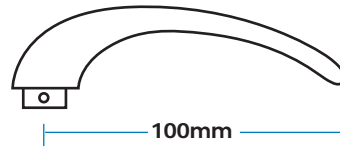
'Truncheon' Handles

A useful design with two versions. The plain handle is driven onto a shaft and is drilled & pinned. Otherwise, a centre hole is provided for screw fixing. 8mm square hole, in-line with axis. Finish is raw or chrome (black optional)

'Pin-Fix' Handles



1/11908 (9.5mm)
9/00608 (8.0mm)
NOTE: A matching window
handle is available as 1/12308



Height _____ (max) 25mm
Secure through pre-drilled holes
in base using pin 121-3.

Traditional 'pin-fix' Handles

A slim, curved handle fixed by pinning through pre-drilled holes in base.

Two versions are available.
1/11908, with 9.5mm square core
9/00608, with 8.0mm square core

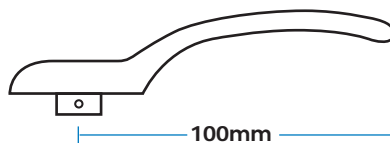
A spring-escutcheon covers base of handle for neat appearance. (order separately)

'Modern' Handle



9/00239
NOTE: A matching window
handle is available as 9/00232

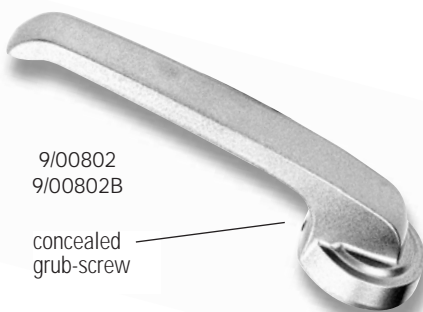
9/00239



Height _____ (max) 25mm
Secure through pre-drilled holes
in base using pin 121-3.

'Modern' Handle

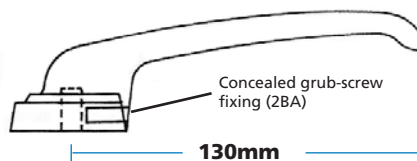
A modern car handle with attractive styling. It has 9.5mm (3/8") square core, in-line with axis, and is secured by pre-drilled holes in base. The adapter shim, 1/07995, can be used for 8mm square shafts.



9/00802
9/00802B

concealed
grub-screw

9/00802 & 9/00802B



Height (max) - 40mm
'Skirt' diameter x 45mm

'Heavy-duty' Handle

A substantial handle, fixed by concealed grub-screw in 'skirt'. Finish is chrome or black, Square core at 8mm (5/16"), in-line with axis.